

LEA Name : Shaler Area SD
Address : 1800 Mount Royal Blvd
Glenshaw, PA 15116

County : Allegheny
AUN Number : 103028302
LEA Type : SD

Annual Financial Report Accuracy Certification Statement

For Fiscal Year Ending
6/30/2023

Pennsylvania Department of Education

&

Office of Comptroller Operations

PDE-2056: Intermediate Unit

PDE-2057: School District, AVTS/CTC, Charter School,
and Special Program Jointure

CERTIFICATION: By signing this page I agree that the electronic data submitted is a complete and accurate statement of the financial operations and status of the local education agency for the fiscal year. It has been prepared in accordance with generally accepted accounting principles and established Commonwealth of PA reporting guidelines.



Chief School Administrator Signature

11/30/23

Date



Board Secretary Signature

11/30/23

Date

Sherri M Jaffee

Contact Person

(412)492-1200

Ext :2806

jaffees@shalerarea.org

Contact Person E-mail Address

Contact Person Telephone Number

(412)492-1236

Contact Person Fax Number

Audit Certification

Annual Financial Report:

For Fiscal Year Ending 6/30/2023

(Pursuant to PA School Code Section 218(b))

LEA Name : Shaler Area SD

AUN Number : 103028302

County : Allegheny

Audit Certification Due:
12/31/2023

This certification is applicable to the Annual Financial Report data submitted through the Consolidated Financial Reporting System (CFRS).

CERTIFICATION: By signing this page I agree that the financial statements of the school have been properly audited as noted above pursuant to Article XXIV, and in the auditor's professional opinion, the Annual Financial Report (PDE-2057) submitted through CFRS is materially consistent with the audited financial statements.

Chief School Administrator

Signature *[Signature]*

Date 12.4.2023

Board Secretary

Signature *[Signature]*

Date 11/30/2023

Sherri M Jaffee

Contact Person

(412)492-1200

Contact Person Telephone Number

Ext :2806

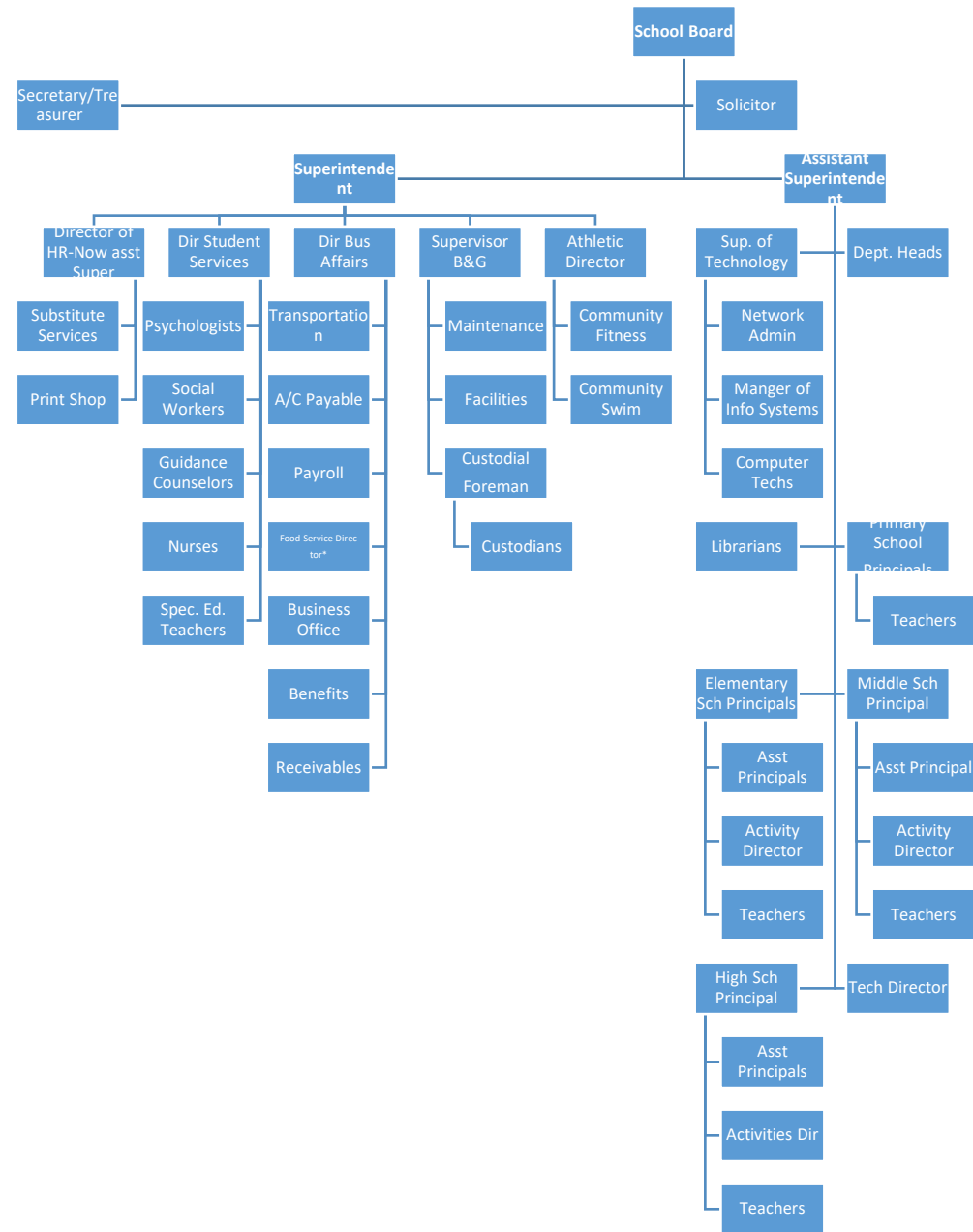
jaffees@shalerarea.org

Contact Person E-mail Address

(412)492-1236

Contact Person Fax Number

Shaler Area School District Organizational Chart



SHALER AREA SCHOOL DISTRICT

POLICY 622

SECTION: FINANCES
TITLE: GASB STATEMENT 34
ADOPTED: May 16, 2001
REVISED:

622. GASB STATEMENT 34

1. Purpose

The Board recognizes the need to implement the required accounting and financial reporting standards stipulated by the Pennsylvania Department of Education.

The primary objectives of implementing the GASB Statement 34 are to assure compliance with state requirements, and properly account for both the financial and economic resources of the District.
2. Authority

Participation of the School District in any such activity shall be in accordance with Board policy.
3. Delegation of Responsibility

The responsibility to coordinate the compilation and preparation of all information necessary to implement this policy is delegated to the Superintendent or his designee.

The designated individual shall be responsible for implementing the necessary procedures to establish and maintain a fixed asset inventory, including depreciation schedules. Depreciation shall be computed on a straight-line basis over the useful lives of the assets, using an averaging convention. Normal maintenance and repairs shall be charged to expense as incurred; major renewals and betterments that materially extend the life or increase the value of the asset shall be capitalized. A schedule of accumulated depreciation shall be consistent from year to year. The basis for depreciation, including groups of assets and useful lives, shall be in writing and submitted for review to the independent auditors.

The Superintendent or his designee shall prepare the required Management Discussion and Analysis (MD&A). The MD&A shall be in the form required by GASB Statement 34 and shall be submitted to the Board for approval, prior to publication.

Prior to submission of the MD&A for Board approval, the District's independent auditors shall review the MD&A, in accordance with SAS No. 52, "Required Supplementary Information."

In order to associate debt with acquired assets, and to avoid net asset deficits, any asset that has been acquired with debt proceeds shall be capitalized, regardless of the cost of the asset. The asset life of these assets shall be considered relative to the time of the respective debt amortizations.

For all other assets not acquired by debt proceeds, the dollar value of any single item for inclusion in the fixed asset accounts shall be not less than \$4,000.

the capitalization threshold shall be set at a level that will capture at least 80 percent of all fixed assets.

The assets listed below do not normally individually meet capitalization threshold criteria:

1. Library books.
2. Classroom texts.
3. Computer equipment.
4. Classroom furniture.
5. Athletic and activities equipment.

These asset category costs shall be capitalized and depreciated as groups when that group's acquisition cost exceeds the capitalization threshold in any given fiscal year.

For group asset depreciation purposes, the estimated useful life of the group may be based on the weighted average or simple average of the useful life of individual items, or on an assessment of the life of the group as a whole. Periodically, the District shall review the estimated life of groups of assets and adjust the remaining depreciation life of the group.

Assets that fall below the capitalization threshold for GASB 34 reporting purposes may still be significant for insurance, warranty service, and obsolescence/replacement policy tracking purposes. The District may record and maintain these non-GASB 34 asset inventories in subsidiary ledgers.

<u>Val Number</u>	<u>Description</u>	<u>Justification</u>
30160	<p>Federal IDEA revenue has been reported in revenue code 8512 or 8513 rather than in code 6832 as pass thru funds. Please make corrections or provide an explanation. Receipt of IDEA funded COVID 19 SECIM grants correctly recorded to 8512 can be noted in the justification.</p> <p>REV8512: \$1,584.00 REV8513: \$0.00</p>	<p>Receipt of IDEA funded COVID 19 SECIM grants correctly recorded to 8512 per PDE confirmation</p>
50160	<p>SOIN: All Governmental Fund General Obligation Bonds must include an amount for Interest Paid during Fiscal Year. Correct data or enter a justification.</p>	<p>The Series 2006 CAB do not have principal payments due until Fiscal Year 2029. Only activity relates to accretion.</p>
50180	<p>SOIN: All Governmental Fund General Obligation Bonds must include an amount for Amount Due Within One Year (Principal and Interest). Correct data or enter a justification.</p>	<p>The Series 2006 CAB do not have principal payments due until Fiscal Year 2029. Only activity relates to accretion.</p>

LEA : 103028302 Shaler Area SD

Printed 12/11/2023 3:03:29 PM

Amounts Expressed in Whole Dollars		<u>General Fund</u> <u>(10)</u>	<u>Student Sponsored</u> <u>Activity Fund</u> <u>(21)</u>	<u>Public Purpose Trust</u> <u>(27)</u>	<u>Other Compt Approved</u> <u>(28)</u>	<u>Athletic / Activity</u> <u>(29)</u>
Assets And Deferred Outflows Of Resources						
Assets						
0100	Cash and Cash Equivalents	9,447,985				
0110	Investments					
0120	Taxes Receivable	8,571,344				
0130	Due From Other Funds					
0141	Due From Other Governments	8,839,286				
0142	State Revenue Receivable					
0143	Federal Revenue Receivable					
0145	Other Intergovernmental Revenue Receivable					
0146	Due from Primary Government					
0147	Due from Component Unit					
0150	Other Receivables	25,115				
0170	Inventories					
0180	Prepaid Expenses (Expenditures)					
0190	Other Current Assets					
Total Assets		\$26,883,730				
0910	Deferred Outflows of Resources					
Total Assets And Deferred Outflows Of Resources		\$26,883,730				

LEA : 103028302 Shaler Area SD

Printed 12/11/2023 3:03:29 PM

Amounts Expressed in Whole Dollars		<u>Capital Reserve (690.</u> <u>1850)</u> <u>(31)</u>	<u>Capital Reserve (1431)</u> <u>(32)</u>	<u>Other Capital Projects</u> <u>Fund</u> <u>(39)</u>	<u>Debt Service</u> <u>(40)</u>	<u>Permanent</u> <u>(90)</u>
Assets And Deferred Outflows Of Resources						
Assets						
0100	Cash and Cash Equivalents			2,735,365	1,193,310	
0110	Investments					
0120	Taxes Receivable					
0130	Due From Other Funds			119,436		
0141	Due From Other Governments					
0142	State Revenue Receivable					
0143	Federal Revenue Receivable					
0145	Other Intergovernmental Revenue Receivable					
0146	Due from Primary Government					
0147	Due from Component Unit					
0150	Other Receivables					
0170	Inventories					
0180	Prepaid Expenses (Expenditures)					
0190	Other Current Assets					
Total Assets				\$2,854,801	\$1,193,310	
0910	Deferred Outflows of Resources					
Total Assets And Deferred Outflows Of Resources				\$2,854,801	\$1,193,310	

LEA : 103028302 Shaler Area SD

Printed 12/11/2023 3:03:29 PM

Amounts Expressed in Whole Dollars		<u>Total Governmental</u> <u>Funds</u>
Assets And Deferred Outflows Of Resources		
Assets		
0100 Cash and Cash Equivalents		13,376,660
0110 Investments		
0120 Taxes Receivable		8,571,344
0130 Due From Other Funds		119,436
0141 Due From Other Governments		8,839,286
0142 State Revenue Receivable		
0143 Federal Revenue Receivable		
0145 Other Intergovernmental Revenue Receivable		
0146 Due from Primary Government		
0147 Due from Component Unit		
0150 Other Receivables		25,115
0170 Inventories		
0180 Prepaid Expenses (Expenditures)		
0190 Other Current Assets		
Total Assets		\$30,931,841
0910 Deferred Outflows of Resources		
Total Assets And Deferred Outflows Of Resources		\$30,931,841

LEA : 103028302 Shaler Area SD

Printed 12/11/2023 3:03:29 PM

Amounts Expressed in Whole Dollars		<u>General Fund</u> <u>(10)</u>	<u>Student Sponsored</u> <u>Activity Fund</u> <u>(21)</u>	<u>Public Purpose Trust</u> <u>(27)</u>	<u>Other Compt Approved</u> <u>(28)</u>	<u>Athletic / Activity</u> <u>(29)</u>
Liabilities And Deferred Inflows Of Resources And Fund Balances						
Liabilities						
0400	Due to Other Funds	606,780				
0411	Due to Other Governments					
0412	Due to Primary Government					
0413	Due to Component Unit					
0420	Accounts Payable	1,133,230				
0430	Contracts Payable					
0440	Current Portion of Long-Term Debt					
0450	Short-Term Payables					
0461	Accrued Salaries and Benefits	10,107,812				
0462	Payroll Deductions and Withholding					
0480	Unearned Revenues	39,782				
0490	Other Current Liabilities	58,627				
Total Liabilities		\$11,946,231				
0950	Deferred Inflows of Resources	7,335,144				
Fund Balances						
0810	Nonspendable Fund Balance					
0820	Restricted Fund Balance					
0830	Committed Fund Balance					
0840	Assigned Fund Balance	1,615,253				
0850	Unassigned Fund Balance	5,987,102				
Total Fund Balances		\$7,602,355				
Total Liabilities, Deferred Inflows Of Resources And Fund Balances		\$26,883,730				

LEA : 103028302 Shaler Area SD

Printed 12/11/2023 3:03:29 PM

Amounts Expressed in Whole Dollars		<u>Capital Reserve (690.</u> <u>1850)</u> <u>(31)</u>	<u>Capital Reserve (1431)</u> <u>(32)</u>	<u>Other Capital Projects</u> <u>Fund</u> <u>(39)</u>	<u>Debt Service</u> <u>(40)</u>	<u>Permanent</u> <u>(90)</u>
Liabilities And Deferred Inflows Of Resources And Fund Balances						
Liabilities						
0400	Due to Other Funds					
0411	Due to Other Governments					
0412	Due to Primary Government					
0413	Due to Component Unit					
0420	Accounts Payable			234,802		
0430	Contracts Payable					
0440	Current Portion of Long-Term Debt					
0450	Short-Term Payables					
0461	Accrued Salaries and Benefits					
0462	Payroll Deductions and Withholding					
0480	Unearned Revenues					
0490	Other Current Liabilities					
Total Liabilities				\$234,802		
0950	Deferred Inflows of Resources					
Fund Balances						
0810	Nonspendable Fund Balance					
0820	Restricted Fund Balance			2,253,408	1,193,310	
0830	Committed Fund Balance			366,591		
0840	Assigned Fund Balance					
0850	Unassigned Fund Balance					
Total Fund Balances				\$2,619,999	\$1,193,310	
Total Liabilities, Deferred Inflows Of Resources And Fund Balances				\$2,854,801	\$1,193,310	

LEA : 103028302 Shaler Area SD

Printed 12/11/2023 3:03:29 PM

Amounts Expressed in Whole Dollars		<u>Total Governmental</u> <u>Funds</u>
Liabilities And Deferred Inflows Of Resources And Fund Balances		
Liabilities		
0400 Due to Other Funds		606,780
0411 Due to Other Governments		
0412 Due to Primary Government		
0413 Due to Component Unit		
0420 Accounts Payable		1,368,032
0430 Contracts Payable		
0440 Current Portion of Long-Term Debt		
0450 Short-Term Payables		
0461 Accrued Salaries and Benefits		10,107,812
0462 Payroll Deductions and Withholding		
0480 Unearned Revenues		39,782
0490 Other Current Liabilities		58,627
Total Liabilities		\$12,181,033
0950 Deferred Inflows of Resources		7,335,144
Fund Balances		
0810 Nonspendable Fund Balance		
0820 Restricted Fund Balance		3,446,718
0830 Committed Fund Balance		366,591
0840 Assigned Fund Balance		1,615,253
0850 Unassigned Fund Balance		5,987,102
Total Fund Balances		\$11,415,664
Total Liabilities, Deferred Inflows Of Resources And Fund Balances		\$30,931,841

Amounts Expressed in Whole Dollars	<u>General Fund</u> <u>(10)</u>	<u>Student Sponsored</u> <u>Activity Fund</u> <u>(21)</u>	<u>Public Purpose Trust</u> <u>(27)</u>	<u>Other Compt Approved</u> <u>(28)</u>	<u>Athletic / Activity</u> <u>(29)</u>
Revenues					
6000 Revenue from Local Sources	58,674,198				
7000 Revenue from State Sources	30,753,387				
8000 Revenue from Federal Sources	2,701,420				
Total Revenues	\$92,129,005				
Expenditures					
1000 Instruction	58,305,235				
2000 Support Services	25,335,996				
3000 Operation of Non-Instructional Services	2,210,919				
4000 Facilities Acquisition, Construction and Improvement Services	173,577				
5110 Debt Service	141,086				
5130 Refund of Prior Year Revenues / Receipts	92,910				
5140 Leases and Other Right-to-Use Arrangements					
Total Expenditures	\$86,259,723				
Excess (Deficiency) Of Revenues Over Expenditures	\$5,869,282				
Other Financing Sources (Uses)					
9110 Face Value of Bonds Issued					
9120 Proceeds from Refunding of Bonds					
9130 Bond Premiums					
9200 Proceeds from Extended Term Financing, Leases, and Other Right-to-Use Arrangements					
9300 Interfund Transfers - IN					
9400 Sale of or Compensation for Loss of Fixed Assets					
9710 Transfers from Component Units					
9720 Transfers from Primary Governments					
9910 Other Financing Sources Not Listed in the 9000 Series					
9990 Insurance Recoveries					
5120 Debt Service – Refunded Bonds					
5150 Bond Discounts					
5200 Interfund Transfers – Out	7,811,745				
5300 Transfers Out to Component Units/Primary Governments					
Total Other Financing Sources (Uses)	(\$7,811,745)				

LEA : 103028302 Shaler Area SD

Printed 12/11/2023 3:03:40 PM

Amounts Expressed in Whole Dollars		<u>Capital Reserve (690.1850)</u> <u>(31)</u>	<u>Capital Reserve (1431)</u> <u>(32)</u>	<u>Other Capital Projects</u> <u>Fund</u> <u>(39)</u>	<u>Debt Service</u> <u>(40)</u>	<u>Permanent</u> <u>(90)</u>
Revenues						
6000	Revenue from Local Sources			112,580	199,432	
7000	Revenue from State Sources					
8000	Revenue from Federal Sources					
Total Revenues				\$112,580	\$199,432	
Expenditures						
1000	Instruction					
2000	Support Services			1,580	170,385	
3000	Operation of Non-Instructional Services					
4000	Facilities Acquisition, Construction and Improvement Services			1,673,135		
5110	Debt Service				7,641,360	
5130	Refund of Prior Year Revenues / Receipts					
5140	Leases and Other Right-to-Use Arrangements					
Total Expenditures				\$1,674,715	\$7,811,745	
Excess (Deficiency) Of Revenues Over Expenditures				(\$1,562,135)	(\$7,612,313)	
Other Financing Sources (Uses)						
9110	Face Value of Bonds Issued					
9120	Proceeds from Refunding of Bonds					
9130	Bond Premiums					
9200	Proceeds from Extended Term Financing, Leases, and Other Right-to-Use Arrangements					
9300	Interfund Transfers - IN				7,811,745	
9400	Sale of or Compensation for Loss of Fixed Assets					
9710	Transfers from Component Units					
9720	Transfers from Primary Governments					
9910	Other Financing Sources Not Listed in the 9000 Series					
9990	Insurance Recoveries					
5120	Debt Service – Refunded Bonds					
5150	Bond Discounts					
5200	Interfund Transfers – Out					
5300	Transfers Out to Component Units/Primary Governments					
Total Other Financing Sources (Uses)					\$7,811,745	

Amounts Expressed in Whole Dollars		<u>Total Governmental Funds</u>
Revenues		
6000	Revenue from Local Sources	58,986,210
7000	Revenue from State Sources	30,753,387
8000	Revenue from Federal Sources	2,701,420
Total Revenues		\$92,441,017
Expenditures		
1000	Instruction	58,305,235
2000	Support Services	25,507,961
3000	Operation of Non-Instructional Services	2,210,919
4000	Facilities Acquisition, Construction and Improvement Services	1,846,712
5110	Debt Service	7,782,446
5130	Refund of Prior Year Revenues / Receipts	92,910
5140	Leases and Other Right-to-Use Arrangements	
Total Expenditures		\$95,746,183
Excess (Deficiency) Of Revenues Over Expenditures		(\$3,305,166)
Other Financing Sources (Uses)		
9110	Face Value of Bonds Issued	
9120	Proceeds from Refunding of Bonds	
9130	Bond Premiums	
9200	Proceeds from Extended Term Financing, Leases, and Other Right-to-Use Arrangements	
9300	Interfund Transfers - IN	7,811,745
9400	Sale of or Compensation for Loss of Fixed Assets	
9710	Transfers from Component Units	
9720	Transfers from Primary Governments	
9910	Other Financing Sources Not Listed in the 9000 Series	
9990	Insurance Recoveries	
5120	Debt Service – Refunded Bonds	
5150	Bond Discounts	
5200	Interfund Transfers – Out	7,811,745
5300	Transfers Out to Component Units/Primary Governments	
Total Other Financing Sources (Uses)		\$0

Amounts Expressed in Whole Dollars		<u>General Fund</u> <u>(10)</u>	<u>Student Sponsored</u> <u>Activity Fund</u> <u>(21)</u>	<u>Public Purpose Trust</u> <u>(27)</u>	<u>Other Compt Approved</u> <u>(28)</u>	<u>Athletic / Activity</u> <u>(29)</u>
Special And Extraordinary Items						
9920	Special Items – Gains					
9930	Extraordinary Items – Gains					
5520	Special Items – Losses					
5530	Extraordinary Items – Losses					
Net Change In Fund Balances		(\$1,942,463)				
Fund Balance						
0001	Fund Balance - Beginning of Fiscal Year	9,544,820				
Fund Balance - End Of Year		\$7,602,357				

Amounts Expressed in Whole Dollars		<u>Capital Reserve (690.</u> <u>1850)</u> <u>(31)</u>	<u>Capital Reserve (1431)</u> <u>(32)</u>	<u>Other Capital Projects</u> <u>Fund</u> <u>(39)</u>	<u>Debt Service</u> <u>(40)</u>	<u>Permanent</u> <u>(90)</u>
Special And Extraordinary Items						
9920	Special Items – Gains					
9930	Extraordinary Items – Gains					
5520	Special Items – Losses					
5530	Extraordinary Items – Losses					
Net Change In Fund Balances				(\$1,562,135)	\$199,432	
Fund Balance						
0001	Fund Balance - Beginning of Fiscal Year			4,182,133	993,878	
Fund Balance - End Of Year				\$2,619,998	\$1,193,310	

Amounts Expressed in Whole Dollars		<u>Total Governmental</u> <u>Funds</u>
Special And Extraordinary Items		
9920	Special Items – Gains	
9930	Extraordinary Items – Gains	
5520	Special Items – Losses	
5530	Extraordinary Items – Losses	
Net Change In Fund Balances		(\$3,305,166)
Fund Balance		
0001	Fund Balance - Beginning of Fiscal Year	14,720,831
Fund Balance - End Of Year		\$11,415,665

LEA : 103028302 Shaler Area SD

Printed 12/11/2023 3:03:41 PM

Amounts Expressed in Whole Dollars	<u>Food Service</u> <u>(51)</u>	<u>Child Care</u> <u>Operations</u> <u>(52)</u>	<u>Other Enterprise</u> <u>(58)</u>	<u>TOTAL</u>	<u>Internal Service</u> <u>(60)</u>
Assets And Deferred Outflows Of Resources					
Current Assets					
0100 Cash and Cash Equivalents	1,359,628			1,359,628	
0110 Investments					
0130 Due From Other Funds	487,344			487,344	
0141 Due From Other Governments	6,762			6,762	
0142 State Revenue Receivable					
0143 Federal Revenue Receivable					
0146 Due from Primary Government					
0147 Due from Component Unit					
0150 Other Receivables	6,527			6,527	
0170 Inventories	24,318			24,318	
0180 Prepaid Expenses (Expenditures)					
0190 Other Current Assets					
Total Current Assets	\$1,884,579			\$1,884,579	
Noncurrent Assets					
0211 Land					
0212 Site Improvements (Net)					
0220 Buildings and Building Improvements (Net)					
0230 Tangible Property and Intangible Right-To-Use Assets (Net)					
0250 Construction in Progress					
0260 Long Term Prepayments					
0290 Other Noncurrent Assets	112,364			112,364	
Total Noncurrent Assets	\$112,364			\$112,364	
0910 Deferred Outflows of Resources					
Total Assets And Deferred Outflows Of Resources	\$1,996,943			\$1,996,943	

LEA : 103028302 Shaler Area SD

Printed 12/11/2023 3:03:41 PM

Amounts Expressed in Whole Dollars	<u>Food Service</u> <u>(51)</u>	<u>Child Care</u> <u>Operations</u> <u>(52)</u>	<u>Other Enterprise</u> <u>(58)</u>	<u>TOTAL</u>	<u>Internal Service</u> <u>(60)</u>
Liabilities And Deferred Inflows Of Resources And Net Position					
Current Liabilities					
0400 Due to Other Funds					
0411 Due to Other Governments					
0413 Due to Component Unit					
0420 Accounts Payable	35,005			35,005	
0430 Contracts Payable					
0440 Current Portion of Long-Term Debt					
0450 Short-Term Payables					
0461 Accrued Salaries and Benefits					
0462 Payroll Deductions and Withholding					
0480 Unearned Revenues	78,823			78,823	
0490 Other Current Liabilities					
Total Current Liabilities	\$113,828			\$113,828	
Noncurrent Liabilities					
0510 Bonds Payable					
0520 Extended-Term Financing Agreements Payable					
0530 Lease and Other Right-To-Use Obligations					
0540 Accumulated Compensated Absences					
0550 Authority Lease Obligations					
0560 Other Post-Employment Benefits (OPEB)					
0570 Net Pension Liability					
0599 Other Noncurrent Liabilities					
Total Noncurrent Liabilities					
Total Liabilities	\$113,828			\$113,828	
0950 Deferred Inflows of Resources					
Net Position					
0791 Net Investment in Capital Assets	112,364			112,364	
0008 Restricted Net Position (0792 – 0798)					
0799 Unrestricted Net Position	1,770,751			1,770,751	
Total Net Position	\$1,883,115			\$1,883,115	
Total Liabilities And Deferred Inflows Of Resources And Net Position	\$1,996,943			\$1,996,943	

Amounts Expressed in Whole Dollars	<u>Food Service</u> <u>(51)</u>	<u>Child Care Operations</u> <u>(52)</u>	<u>Other Enterprise</u> <u>(58)</u>	<u>TOTAL</u>	<u>Internal Service</u> <u>(60)</u>
Operating Revenues					
6600 Food Service Revenue	828,727			828,727	
0071 Charges for Services					
0072 Other Operating Revenue					
Total Operating Revenues	\$828,727			\$828,727	
Operating Expenses					
100 Personnel Services – Salaries					
200 Personnel Services – Employee Benefits					
300 Purchased Professional and Technical Services	2,799			2,799	
400 Purchased Property Services					
500 Other Purchased Services	1,850,327			1,850,327	
600 Supplies	117,380			117,380	
740 Depreciation	7,980			7,980	
770 Amortization Expense					
810 Dues and Fees					
880 Refunds of Prior Years' Receipts					
890 Miscellaneous Expenditures					
Total Operating Expenses	\$1,978,486			\$1,978,486	
Operating Income (Loss)	(\$1,149,759)			(\$1,149,759)	
Non Operating Revenues (Expenses)					
6500 Earnings on Investments	42,606			42,606	
6830 Federal Revenue from Intermediary Sources					
6920 Contributions and Donations from Private Sources					
6930 Gains or Losses on Sale of Fixed Assets					
6991 Refunds of a Prior Year Expenditure					
7000 Revenue from State Sources	226,465			226,465	
8000 Revenue from Federal Sources	1,588,243			1,588,243	
9990 Insurance Recoveries					
820 Claims and Judgments Against the LEA					
830 Interest					
TOTAL Non Operating Revenues (Expenses)	\$1,857,314			\$1,857,314	
Income (Loss) Before Contributions And Transfers	\$707,555			\$707,555	

Amounts Expressed in Whole Dollars	<u>Food Service</u> <u>(51)</u>	<u>Child Care Operations</u> <u>(52)</u>	<u>Other Enterprise</u> <u>(58)</u>	<u>TOTAL</u>	<u>Internal Service</u> <u>(60)</u>
Contributions, Transfers, and Special and Extraordinary Items					
5200 Interfund Transfers – Out					
5300 Transfers Out to Component Units/Primary Governments					
5520 Special Items – Losses					
5530 Extraordinary Items – Losses					
9300 Interfund Transfers - IN					
9500 Capital Contributions					
9700 Transfers IN From Component Units/Primary Governments					
9920 Special Items – Gains					
9930 Extraordinary Items – Gains					
Change In Net Position	\$707,555			\$707,555	
0002 Net Position - Beginning of Fiscal Year	1,175,560			1,175,560	
0003 Accounting Changes / Residual Equity Transfers					
Net Position - End Of Year	\$1,883,115			\$1,883,115	

LEA : 103028302 Shaler Area SD

Printed 12/11/2023 3:03:54 PM

Amounts Expressed in Whole Dollars	<u>Food Service</u> <u>(51)</u>	<u>Child Care Operations</u> <u>(52)</u>	<u>Other Enterprise</u> <u>(58)</u>	<u>TOTAL</u>	<u>Internal Service(60)</u>
Cash Flows From Operating Activities					
0011 Cash Receipts From Users	860,247			860,247	
0012 Cash Receipts From Assessments Made to Other Funds					
0013 Cash Receipts From Earnings on Investments					
0014 Cash Receipts From Other Operating Revenue					
0015 Cash Payments To Employees For Services					
0016 Cash Payments For Insurance Claims					
0017 Cash Payments To Suppliers For Goods and Services	2,028,319			2,028,319	
0018 Cash Payments For Other Operating Expenses					
Net Cash Provided By (Used For) Operating Activities	(\$1,168,072)			(\$1,168,072)	
Cash Flows From Non-Capital Financing Activities					
0021 Receipts From Local Sources - 6000					
0022 Receipts From State Sources - 7000	225,106			225,106	
0023 Receipts From Federal Sources -8000	1,338,823			1,338,823	
0024 Notes and Loans Received (Repaid)					
0025 Interest Paid on Notes/Loans - 5100-830					
0026 Operating Transfers In (Out)/Residual Equity Trans					
0027 Operating Transfers In (Out) Primary Government / Comp Unit					
0028 Receipts From Refund of Prior Year Expenditures - 6991					
0029 Special and Extraordinary Gains (losses)					
0030 Receipts from Insurance Recoveries -9990					
Net Cash Prov By (Used for) Non-Capital Financing Activities	\$1,563,929			\$1,563,929	
Cash Flows From Capital and Related Financing Activities					
0031 Payments For Fac Acq, Const, and Imp - 4000	(72,469)			(72,469)	
0032 Gain / (Loss) on Sale of Fixed Assets - 6930					
0033 Proceeds From Extended Term Financing - 9200					
0034 Principal Paid on Financing Agreements					
0035 Interest Paid on Financing Agreements - 5100-830					
0036 (Inc) Dec in Contributed Capital					
Net Cash Prov By (Used for) Capital and Related Financing Activities	(\$72,469)			(\$72,469)	
Cash Flows From Investing Activities					
0041 Earnings on Investments - 6500	42,606			42,606	
0042 Purchase of Inv Securities / Deposits to Inv Pools					
0043 Receipts From Investment Pool Withdrawals					
0044 Proceeds from Sale and Maturity of Inv Securities					

LEA : 103028302 Shaler Area SD

Printed 12/11/2023 3:03:54 PM

0045 Loans Received (Paid)

Net Cash Prov By (Used for) Investing Activities	\$42,606	\$42,606
--------------------------------------------------	----------	----------

LEA : 103028302 Shaler Area SD

Printed 12/11/2023 3:03:54 PM

	<u>Food Service</u> <u>(51)</u>	<u>Child Care Operations</u> <u>(52)</u>	<u>Other Enterprise</u> <u>(58)</u>	<u>TOTAL</u>	<u>Internal Service</u> <u>(60)</u>
Net Increase (Decrease) in Cash Flows	365,994			365,994	
0004 Cash and Cash Equivalents Beginning of Year	993,634			993,634	
Cash and Cash Equivalents at Year End	\$1,359,628			\$1,359,628	
<hr/>					
Reconciliation of Operating Income (Loss) To Net Cash Provided by (Used For) Operating Activities					
0005 Operating Income (Loss) per REP	(1,149,759)			(1,149,759)	
Adjustments					
0051 Depreciation and Net Amortization	7,980			7,980	
0052 Provision for Uncollectible Accounts					
0053 Other Adjustments	99,868			99,868	
Effect of Changes in Assets, Liabilities, Deferred Outflows and Deferred Inflows					
0054 (Inc) Dec In Accounts Receivable (0120-0150)					
0055 Advances to Other Funds					
0056 (Inc) Dec in Inventories (0170)	4,016			4,016	
0057 (Inc) Dec in Prepaid Expenses (0180)					
0058 (Inc) Dec in Other Current or Noncurrent Assets	(4,113)			(4,113)	
0064 Deferred Outflows (0910)					
0059 Inc (Dec) in Accounts Payable (0400-0450)	(161,697)			(161,697)	
0060 Inc (Dec) in Accrued Salaries/Benefits (0461)					
0065 Inc (Dec) in Net Pension Liabilities (0570)					
0066 Inc (Dec) in Other Postemp Benefit Oblig (0560)					
0061 Inc (Dec) in Payroll Deductions/Withholding (0462)					
0062 Inc (Dec) in Unearned Revenue (0480)	35,633			35,633	
0063 Inc (Dec) in Other Current or Noncurrent Liabilities					
0067 Deferred Inflows (0950)					
Total Adjustments	(\$18,313)			(\$18,313)	
Cash Provided By (Used for) Total	(\$1,168,072)			(\$1,168,072)	
<hr/>					

COMBINED STATEMENT OF CASH FLOWS
SCHEDULE OF NONCASH INVESTING, CAPITAL, AND FINANCING ACTIVITIES

Explanation of Transaction and Balance Sheet Effect	Amount
Total	

LEA : 103028302 Shaler Area SD

Printed 12/11/2023 3:03:55 PM

Amounts Expressed in Whole Dollars		<u>Private Purpose Trust</u> <u>(71)</u>	<u>Investment Trust</u> <u>(72)</u>	<u>Pension Trust</u> <u>(73)</u>	<u>Student Activity Custodial</u> <u>(81)</u>
Assets And Deferred Outflows Of Resources					
Assets					
0100	Cash and Cash Equivalents	277,885			
0110	Investments				
0130	Due From Other Funds				
0140	Due from Other Governments, Primary Government and Component Units				
0150	Other Receivables				
0170	Inventories				
0180	Prepaid Expenses (Expenditures)				
0190	Other Current Assets				
0220	Buildings and Building Improvements (Net)				
0230	Tangible Property and Intangible Right-To-Use Assets (Net)				
Total Assets		\$277,885			
0910	Deferred Outflows of Resources				
Total Assets And Deferred Outflows Of Resources		\$277,885			

LEA : 103028302 Shaler Area SD

Printed 12/11/2023 3:03:55 PM

Amounts Expressed in Whole Dollars		<u>Other Custodial</u> <u>(89)</u>	<u>Fiduciary Component Units</u> <u>(98)</u>	<u>Total Fiduciary Funds</u>
Assets And Deferred Outflows Of Resources				
Assets				
0100	Cash and Cash Equivalents	417,982		695,867
0110	Investments			
0130	Due From Other Funds			
0140	Due from Other Governments, Primary Government and Component Units			
0150	Other Receivables			
0170	Inventories			
0180	Prepaid Expenses (Expenditures)			
0190	Other Current Assets			
0220	Buildings and Building Improvements (Net)			
0230	Tangible Property and Intangible Right-To-Use Assets (Net)			
Total Assets		\$417,982		\$695,867
0910	Deferred Outflows of Resources			
Total Assets And Deferred Outflows Of Resources		\$417,982		\$695,867

LEA : 103028302 Shaler Area SD

Printed 12/11/2023 3:03:55 PM

Amounts Expressed in Whole Dollars	<u>Private Purpose Trust</u> <u>(71)</u>	<u>Investment Trust</u> <u>(72)</u>	<u>Pension Trust</u> <u>(73)</u>	<u>Student Activity Custodial</u> <u>(81)</u>
Liabilities, Deferred Inflows Of Resources And Net Position				
Liabilities				
0400 Due to Other Funds				
0410 Due to Other Governments, Primary Government and Component Units				
0420 Accounts Payable	49,770			
0430 Contracts Payable				
0450 Short-Term Payables				
0460 Payroll Accruals and Withholdings				
0480 Unearned Revenues				
0490 Other Current Liabilities				
Total Liabilities	\$49,770			
0950 Deferred Inflows of Resources				
Net Position				
0791 Net Investment in Capital Assets				
0009 Restricted Net Position (0792 – 0798)	228,115			
0799 Unrestricted Net Position				
Total Net Position	\$228,115			
Total Liabilities, Deferred Inflows Of Resources And Net Position	\$277,885			

LEA : 103028302 Shaler Area SD

Printed 12/11/2023 3:03:55 PM

Amounts Expressed in Whole Dollars		<u>Other Custodial</u> <u>(89)</u>	<u>Fiduciary Component Units</u> <u>(98)</u>	<u>Total Fiduciary Funds</u>
Liabilities, Deferred Inflows Of Resources And Net Position				
Liabilities				
0400	Due to Other Funds			
0410	Due to Other Governments, Primary Government and Component Units			
0420	Accounts Payable			49,770
0430	Contracts Payable			
0450	Short-Term Payables			
0460	Payroll Accruals and Withholdings			
0480	Unearned Revenues			
0490	Other Current Liabilities			
Total Liabilities				\$49,770
0950	Deferred Inflows of Resources			
Net Position				
0791	Net Investment in Capital Assets			
0009	Restricted Net Position (0792 – 0798)	417,982		646,097
0799	Unrestricted Net Position			
Total Net Position		\$417,982		\$646,097
Total Liabilities, Deferred Inflows Of Resources And Net Position		\$417,982		\$695,867

LEA : 103028302 Shaler Area SD

Printed 12/11/2023 3:03:56 PM

Amounts Expressed in Whole Dollars		<u>Private Purpose Trust</u> <u>(71)</u>	<u>Investment Trust</u> <u>(72)</u>	<u>Pension Trust</u> <u>(73)</u>	<u>Student Activity</u> <u>Custodial</u> <u>(81)</u>	<u>Other Custodial</u> <u>(89)</u>	<u>Fiduciary Component</u> <u>Units</u> <u>(98)</u>
Additions							
0091	Gifts and Contributions	71,346					
0095	Net Investment Earnings						
0092	Other Additions					423,920	
Deductions							
0093	Scholarships Awarded	61,886					
0094	Other Deductions					410,291	
Change In Net Position		\$9,460				\$13,629	
0006	Net Position – Beginning of Fiscal Year	218,655				404,353	
0007	Net Position Held in Trust for Pension Benefits						
Net Position - End of Fiscal Year		\$228,115				\$417,982	

LEA : 103028302 Shaler Area SD

Printed 12/11/2023 3:03:56 PM

Amounts Expressed in Whole Dollars		<u>Total Fiduciary</u> <u>Funds</u>
Additions		
0091	Gifts and Contributions	71,346
0095	Net Investment Earnings	
0092	Other Additions	423,920
Deductions		
0093	Scholarships Awarded	61,886
0094	Other Deductions	410,291
Change In Net Position		\$23,089
0006	Net Position – Beginning of Fiscal Year	623,008
0007	Net Position Held in Trust for Pension Benefits	
Net Position - End of Fiscal Year		\$646,097

	Revenue Reported In Current Year	Current Year Tax Accrual	Prior Year Tax Accrual	Taxes Collected In Current Year
Revenue from Local Sources				
6111 Current Real Estate Taxes	46,711,480.13			46,711,480.13
6113 Public Utility Realty Taxes	52,935.82			52,935.82
6143 Current Act 511 Local Services Taxes	31,795.46			31,795.46
6151 Current Act 511 Earned Income Taxes	6,806,398.44			6,806,398.44
6153 Current Act 511 Real Estate Transfer Taxes	805,258.05			805,258.05
6411 Delinquent Real Estate Taxes	1,525,321.73			1,525,321.73
6500 Earnings on Investments	889,381.36			
6700 Revenues from LEA Activities	66,673.00			
6831 Federal Revenue Received from Other Pennsylvania Public LEAs	5,920.00			
6832 Federal IDEA Revenue Received as Pass Through	839,655.45			
6890 Other Revenue from Intermediary Sources	14,880.96			
6910 Rentals	47,123.00			
6920 Contributions and Donations from Private Sources	183,585.62			
6980 Revenue from Community Services Activities	37,440.75			
6991 Refunds of a Prior Year Expenditure	527,769.88			
6999 Other Revenues Not Specified Above	128,577.88			
TOTAL Revenue from Local Sources	\$58,674,197.53			\$55,933,189.63

	Revenue Reported In Current Year			
<u>Revenue from State Sources</u>				
7111 Basic Education Funding-Formula	12,620,939.02			
7112 Basic Education Funding-Social Security	1,564,226.19			
7160 Tuition for Orphans Subsidy	74,878.75			
7271 Special Education funds for School-Aged Pupils	3,999,066.87			
7311 Pupil Transportation Subsidy	1,174,799.96			
7312 Nonpublic and Charter School Pupil Transportation Subsidy	123,200.00			
7320 Rental and Sinking Fund Payments / Building Reimbursement Subsidy	341,762.14			
7340 State Property Tax Reduction Allocation	2,570,581.83			
7505 Ready to Learn Block Grant	706,471.00			
7820 State Share of Retirement Contributions	7,577,461.54			
TOTAL Revenue from State Sources	\$30,753,387.30			

	Revenue Reported In Current Year			
<u>Revenue from Federal Sources</u>				
8512 IDEA, Part B	1,584.00			
8514 Title I - Improving the Academic Achievement of the Disadvantaged	710,312.00			
8515 Title II - Preparing, Training, and Recruiting High Quality Teachers and Principals	112,367.93			
8517 Title IV - 21st Century Schools	118,405.00			
8741 Elementary and Secondary School Emergency Relief Fund (ESSER)	(2,669.90)			
8743 ESSER II - Elementary and Secondary School Emergency Relief Fund	198,820.70			
8744 ARP ESSER - Elementary and Secondary School Emergency Relief Fund	908,224.06			
8751 ARP ESSER Learning Loss	10,911.00			
8752 ARP ESSER Summer Programs	4,492.00			
8754 ARP ESSER Homeless Children and Youth Funds	811.00			
8810 School-Based Access Medicaid Reimbursement Program (SBAP) Reimbursements (Access)	626,417.19			
8820 Medical Assistance Reimbursement for Administrative Claiming (Quarterly) Program	11,745.00			
TOTAL Revenue from Federal Sources	\$2,701,419.98			
TOTAL FROM ALL SOURCES	\$92,129,004.81			\$55,933,189.63

LEA : 103028302 Shaler Area SD

Printed 12/11/2023 3:03:59 PM

	<u>General Fund (10)</u>	<u>Student Sponsored Activity Fund (21)</u>	<u>Public Purpose Trust (27)</u>	<u>Other Compt Approved (28)</u>	<u>Athletic / Activity (29)</u>	<u>Capital Reserve (690, 1850) (31)</u>
6000 Revenue from Local Sources						
6111 Current Real Estate Taxes	46,711,480.13					
6113 Public Utility Realty Taxes	52,935.82					
6143 Current Act 511 Local Services Taxes	31,795.46					
6151 Current Act 511 Earned Income Taxes	6,806,398.44					
6153 Current Act 511 Real Estate Transfer Taxes	805,258.05					
6411 Delinquent Real Estate Taxes	1,525,321.73					
6500 Earnings on Investments	889,381.36					
6700 Revenues from LEA Activities	66,673.00					
6831 Federal Revenue Received from Other Pennsylvania Public LEAs	5,920.00					
6832 Federal IDEA Revenue Received as Pass Through	839,655.45					
6890 Other Revenue from Intermediary Sources	14,880.96					
6910 Rentals	47,123.00					
6920 Contributions and Donations from Private Sources	183,585.62					
6980 Revenue from Community Services Activities	37,440.75					
6991 Refunds of a Prior Year Expenditure	527,769.88					
6999 Other Revenues Not Specified Above	128,577.88					
6000 Total Revenue from Local Sources	\$58,674,197.53					
7000 Revenue from State Sources						
7111 Basic Education Funding-Formula	12,620,939.02					
7112 Basic Education Funding-Social Security	1,564,226.19					
7160 Tuition for Orphans Subsidy	74,878.75					
7271 Special Education funds for School-Aged Pupils	3,999,066.87					
7311 Pupil Transportation Subsidy	1,174,799.96					
7312 Nonpublic and Charter School Pupil Transportation Subsidy	123,200.00					
7320 Rental and Sinking Fund Payments / Building Reimbursement Subsidy	341,762.14					
7340 State Property Tax Reduction Allocation	2,570,581.83					
7505 Ready to Learn Block Grant	706,471.00					
7820 State Share of Retirement Contributions	7,577,461.54					
7000 Total Revenue from State Sources	\$30,753,387.30					
8000 Revenue from Federal Sources						
8512 IDEA, Part B	1,584.00					
8514 Title I - Improving the Academic Achievement of the Disadvantaged	710,312.00					
8515 Title II - Preparing, Training, and Recruiting High Quality Teachers and Principals	112,367.93					

LEA : 103028302 Shaler Area SD

Printed 12/11/2023 3:03:59 PM

	<u>Capital Reserve</u> <u>(1431) (32)</u>	<u>Other Capital</u> <u>Projects Fund (39)</u>	<u>Debt Service (40)</u>	<u>Permanent (90)</u>	<u>Total</u>
6000 Revenue from Local Sources					
6111 Current Real Estate Taxes					46,711,480.13
6113 Public Utility Realty Taxes					52,935.82
6143 Current Act 511 Local Services Taxes					31,795.46
6151 Current Act 511 Earned Income Taxes					6,806,398.44
6153 Current Act 511 Real Estate Transfer Taxes					805,258.05
6411 Delinquent Real Estate Taxes					1,525,321.73
6500 Earnings on Investments		112,580.00	199,432.00		1,201,393.36
6700 Revenues from LEA Activities					66,673.00
6831 Federal Revenue Received from Other Pennsylvania Public LEAs					5,920.00
6832 Federal IDEA Revenue Received as Pass Through					839,655.45
6890 Other Revenue from Intermediary Sources					14,880.96
6910 Rentals					47,123.00
6920 Contributions and Donations from Private Sources					183,585.62
6980 Revenue from Community Services Activities					37,440.75
6991 Refunds of a Prior Year Expenditure					527,769.88
6999 Other Revenues Not Specified Above					128,577.88
6000 Total Revenue from Local Sources		\$112,580.00	\$199,432.00		\$58,986,209.53
7000 Revenue from State Sources					
7111 Basic Education Funding-Formula					12,620,939.02
7112 Basic Education Funding-Social Security					1,564,226.19
7160 Tuition for Orphans Subsidy					74,878.75
7271 Special Education funds for School-Aged Pupils					3,999,066.87
7311 Pupil Transportation Subsidy					1,174,799.96
7312 Nonpublic and Charter School Pupil Transportation Subsidy					123,200.00
7320 Rental and Sinking Fund Payments / Building Reimbursement Subsidy					341,762.14
7340 State Property Tax Reduction Allocation					2,570,581.83
7505 Ready to Learn Block Grant					706,471.00
7820 State Share of Retirement Contributions					7,577,461.54
7000 Total Revenue from State Sources					\$30,753,387.30
8000 Revenue from Federal Sources					
8512 IDEA, Part B					1,584.00
8514 Title I - Improving the Academic Achievement of the Disadvantaged					710,312.00
8515 Title II - Preparing, Training, and Recruiting High Quality Teachers and Principals					112,367.93

LEA : 103028302 Shaler Area SD

Printed 12/11/2023 3:03:59 PM

	<u>General Fund (10)</u>	<u>Student Sponsored Activity Fund (21)</u>	<u>Public Purpose Trust (27)</u>	<u>Other Compt Approved (28)</u>	<u>Athletic / Activity (29)</u>	<u>Capital Reserve (690, 1850) (31)</u>
8000 Revenue from Federal Sources						
8517 Title IV - 21st Century Schools	118,405.00					
8741 Elementary and Secondary School Emergency Relief Fund (ESSER)	(2,669.90)					
8743 ESSER II - Elementary and Secondary School Emergency Relief Fund	198,820.70					
8744 ARP ESSER - Elementary and Secondary School Emergency Relief Fund	908,224.06					
8751 ARP ESSER Learning Loss	10,911.00					
8752 ARP ESSER Summer Programs	4,492.00					
8754 ARP ESSER Homeless Children and Youth Funds	811.00					
8810 School-Based Access Medicaid Reimbursement Program (SBAP) Reimbursements (Access)	626,417.19					
8820 Medical Assistance Reimbursement for Administrative Claiming (Quarterly) Program	11,745.00					
8000 Total Revenue from Federal Sources	\$2,701,419.98					
9000 Other Financing Sources						
9310 General Fund Transfers						
9000 Total Other Financing Sources						
Total From All Sources	\$92,129,004.81					

LEA : 103028302 Shaler Area SD

Printed 12/11/2023 3:03:59 PM

	<u>Capital Reserve</u> <u>(1431) (32)</u>	<u>Other Capital</u> <u>Projects Fund (39)</u>	<u>Debt Service (40)</u>	<u>Permanent (90)</u>	<u>Total</u>
8000 Revenue from Federal Sources					
8517 Title IV - 21st Century Schools					118,405.00
8741 Elementary and Secondary School Emergency Relief Fund (ESSER)					(2,669.90)
8743 ESSER II - Elementary and Secondary School Emergency Relief Fund					198,820.70
8744 ARP ESSER - Elementary and Secondary School Emergency Relief Fund					908,224.06
8751 ARP ESSER Learning Loss					10,911.00
8752 ARP ESSER Summer Programs					4,492.00
8754 ARP ESSER Homeless Children and Youth Funds					811.00
8810 School-Based Access Medicaid Reimbursement Program (SBAP) Reimbursements (Access)					626,417.19
8820 Medical Assistance Reimbursement for Administrative Claiming (Quarterly) Program					11,745.00
8000 Total Revenue from Federal Sources					\$2,701,419.98
9000 Other Financing Sources					
9310 General Fund Transfers			7,811,745.00		7,811,745.00
9000 Total Other Financing Sources			\$7,811,745.00		\$7,811,745.00
Total From All Sources		\$112,580.00	\$8,011,177.00		\$100,252,761.81

LEA : 103028302 Shaler Area SD

Printed 12/11/2023 3:04:00 PM

	<u>General Fund (10)</u>	<u>Student Sponsored Activity Fund (21)</u>	<u>Public Purpose Trust (27)</u>	<u>Other Compt Approved (28)</u>	<u>Athletic / Activity (29)</u>	<u>Capital Reserve (690. 1850) (31)</u>
Revenue from Local Sources	58,674,197.53					
Revenue from State Sources	30,753,387.30					
Revenue from Federal Sources	2,701,419.98					
Other Financing Sources						
Total From All Sources	\$92,129,004.81					

LEA : 103028302 Shaler Area SD

Printed 12/11/2023 3:04:00 PM

	<u>Capital Reserve (1431)</u> <u>(32)</u>	<u>Other Capital Projects</u> <u>Fund (39)</u>	<u>Debt Service (40)</u>	<u>Permanent (90)</u>	<u>Total</u>
Revenue from Local Sources		112,580.00	199,432.00		58,986,209.53
Revenue from State Sources					30,753,387.30
Revenue from Federal Sources					2,701,419.98
Other Financing Sources			7,811,745.00		7,811,745.00
Total From All Sources		\$112,580.00	\$8,011,177.00		\$100,252,761.81

LEA : 103028302 Shaler Area SD

Printed 12/11/2023 3:04:03 PM

General Fund (10)

1000 Instruction	Total
100 <u>Personnel Services – Salaries</u>	
100 Personnel Services – Salaries	30,470,621.29
Total Personnel Services – Salaries	\$30,470,621.29
200 <u>Personnel Services – Employee Benefits</u>	
210 Group Insurance – Contracted Provider	6,373,420.29
220 Social Security Contributions	2,286,197.49
230 PSERS Retirement Contributions	10,778,283.34
280 Other Post-Employment Benefits (OPEB)	10,800.00
Total Personnel Services – Employee Benefits	\$19,448,701.12
300 <u>Purchased Professional and Technical Services</u>	
322 Professional Educational Services – Ius	696,485.05
323 Professional Educational Services – Other Educational Agencies	206,537.30
329 Professional Educational Services – Other	180,681.00
Total Purchased Professional and Technical Services	\$1,083,703.35
400 <u>Purchased Property Services</u>	
430 Repairs and Maintenance Services	11,164.33
Total Purchased Property Services	\$11,164.33
500 <u>Other Purchased Services</u>	
510 Student Transportation Services	9,587.41
561 Tuition To Other School Districts Within the State	71,018.25
562 Tuition To Pennsylvania Charter Schools	2,152,643.20
563 Tuition To Nonpublic Schools	674,857.34
564 Tuition To Career and Technology Centers	1,462,184.20
567 Tuition To Approved Private Schools (APS) and PA Chartered Schools for the Deaf and Blind	792,738.11
568 Tuition To Private Residential Rehabilitative Institutions (PRRI) [In-State] and Detention Centers	44,076.23
569 Tuition – Other	216,203.96
580 Travel	1,783.90
594 IU Payment By Withholding for Institutionalized Children's Programs – Special Classes	1,127.66
599 Other Miscellaneous Purchased Services	9,670.49
Total Other Purchased Services	\$5,435,890.75
600 <u>Supplies</u>	
610 General Supplies	440,128.08
640 Books and Periodicals	616,248.56
650 Supplies & Fees – Technology Related	483,973.94
Total Supplies	\$1,540,350.58
700 <u>Property</u>	
752 Capital Equipment – Original and Additional	26,210.25
758 Capitalized Technology Software - Original	221,184.47
762 Capitalized Equipment - Replacement	16,423.95
766 Capitalized Technology Equipment – Replacement	23,871.28
768 Capitalized Technology Software - Replacement	21,085.40
Total Property	\$308,775.35

LEA : 103028302 Shaler Area SD

Printed 12/11/2023 3:04:03 PM

General Fund (10)		
1000 Instruction		<u>Total</u>
800 <u>Other Objects</u>		
810 Dues and Fees		6,028.00
Total Other Objects		\$6,028.00
Total 1000 Instruction		\$58,305,234.77

LEA : 103028302 Shaler Area SD

Printed 12/11/2023 3:04:03 PM

General Fund (10)

1100 Regular Programs – Elementary / Secondary	Elementary	Secondary	Federal	Total
100 Personnel Services – Salaries				
100 Personnel Services – Salaries	11,190,035.32	11,655,449.30	191,139.03	23,036,623.65
Total Personnel Services – Salaries	\$11,190,035.32	\$11,655,449.30	\$191,139.03	\$23,036,623.65
200 Personnel Services – Employee Benefits				
210 Group Insurance – Contracted Provider	2,234,425.67	2,316,185.31	4,502.07	4,555,113.05
220 Social Security Contributions	839,394.34	873,823.67	14,260.16	1,727,478.17
230 PSERS Retirement Contributions	3,969,836.37	4,180,387.63	12,760.01	8,162,984.01
280 Other Post-Employment Benefits (OPEB)	10,800.00			10,800.00
Total Personnel Services – Employee Benefits	\$7,054,456.38	\$7,370,396.61	\$31,522.24	\$14,456,375.23
300 Purchased Professional and Technical Services				
322 Professional Educational Services – Ius			9,047.00	9,047.00
323 Professional Educational Services – Other Educational Agencies			4,000.00	4,000.00
Total Purchased Professional and Technical Services			\$13,047.00	\$13,047.00
400 Purchased Property Services				
430 Repairs and Maintenance Services	4,045.27	7,119.06		11,164.33
Total Purchased Property Services	\$4,045.27	\$7,119.06		\$11,164.33
500 Other Purchased Services				
510 Student Transportation Services		448.96	38.62	487.58
562 Tuition To Pennsylvania Charter Schools	506,928.41	834,011.33		1,340,939.74
580 Travel	981.26	347.69		1,328.95
599 Other Miscellaneous Purchased Services		345.49	6,325.00	6,670.49
Total Other Purchased Services	\$507,909.67	\$835,153.47	\$6,363.62	\$1,349,426.76
600 Supplies				
610 General Supplies	168,041.81	192,280.67	42,009.76	402,332.24
640 Books and Periodicals	189,299.99	291,989.43	134,766.90	616,056.32
650 Supplies & Fees – Technology Related	49,686.72	221,996.01	177,049.46	448,732.19
Total Supplies	\$407,028.52	\$706,266.11	\$353,826.12	\$1,467,120.75
700 Property				
752 Capital Equipment – Original and Additional		13,018.88		13,018.88
758 Capitalized Technology Software - Original			221,184.47	221,184.47
762 Capitalized Equipment - Replacement	2,074.00	14,349.95		16,423.95
766 Capitalized Technology Equipment – Replacement	7,970.00	15,901.28		23,871.28
768 Capitalized Technology Software - Replacement		21,085.40		21,085.40
Total Property	\$10,044.00	\$64,355.51	\$221,184.47	\$295,583.98
800 Other Objects				
810 Dues and Fees		350.00	3,230.00	3,580.00
Total Other Objects		\$350.00	\$3,230.00	\$3,580.00
Total 1100 Regular Programs – Elementary / Secondary	\$19,173,519.16	\$20,639,090.06	\$820,312.48	\$40,632,921.70

LEA : 103028302 Shaler Area SD

Printed 12/11/2023 3:04:03 PM

General Fund (10)

1110 Regular Programs

	<u>Elementary</u>	<u>Secondary</u>	<u>Federal</u>	<u>Total</u>
100 <u>Personnel Services – Salaries</u>				
100 Personnel Services – Salaries	11,190,035.32	11,655,449.30	56,793.60	22,902,278.22
Total Personnel Services – Salaries	\$11,190,035.32	\$11,655,449.30	\$56,793.60	\$22,902,278.22
200 <u>Personnel Services – Employee Benefits</u>				
210 Group Insurance – Contracted Provider	2,234,425.67	2,316,185.31	3,048.00	4,553,658.98
220 Social Security Contributions	839,394.34	873,823.67	4,047.56	1,717,265.57
230 PSERS Retirement Contributions	3,969,836.37	4,180,387.63	5,023.40	8,155,247.40
280 Other Post-Employment Benefits (OPEB)	10,800.00			10,800.00
Total Personnel Services – Employee Benefits	\$7,054,456.38	\$7,370,396.61	\$12,118.96	\$14,436,971.95
400 <u>Purchased Property Services</u>				
430 Repairs and Maintenance Services	4,045.27	7,119.06		11,164.33
Total Purchased Property Services	\$4,045.27	\$7,119.06		\$11,164.33
500 <u>Other Purchased Services</u>				
510 Student Transportation Services		448.96		448.96
562 Tuition To Pennsylvania Charter Schools	506,928.41	834,011.33		1,340,939.74
580 Travel	981.26	347.69		1,328.95
599 Other Miscellaneous Purchased Services		345.49	6,325.00	6,670.49
Total Other Purchased Services	\$507,909.67	\$835,153.47	\$6,325.00	\$1,349,388.14
600 <u>Supplies</u>				
610 General Supplies	168,041.81	192,280.67	27,201.85	387,524.33
640 Books and Periodicals	189,299.99	291,989.43	81,932.41	563,221.83
650 Supplies & Fees – Technology Related	49,686.72	221,996.01	176,699.47	448,382.20
Total Supplies	\$407,028.52	\$706,266.11	\$285,833.73	\$1,399,128.36
700 <u>Property</u>				
752 Capital Equipment – Original and Additional		13,018.88		13,018.88
758 Capitalized Technology Software - Original			198,646.05	198,646.05
762 Capitalized Equipment - Replacement	2,074.00	14,349.95		16,423.95
766 Capitalized Technology Equipment – Replacement	7,970.00	15,901.28		23,871.28
768 Capitalized Technology Software - Replacement		21,085.40		21,085.40
Total Property	\$10,044.00	\$64,355.51	\$198,646.05	\$273,045.56
800 <u>Other Objects</u>				
810 Dues and Fees		350.00	405.00	755.00
Total Other Objects		\$350.00	\$405.00	\$755.00
Total 1110 Regular Programs	\$19,173,519.16	\$20,639,090.06	\$560,122.34	\$40,372,731.56

LEA : 103028302 Shaler Area SD

Printed 12/11/2023 3:04:03 PM

General Fund (10)				
1190 Federally-Funded Regular Programs	Elementary	Secondary	Federal	Total
100 <u>Personnel Services – Salaries</u>				
100 Personnel Services – Salaries			134,345.43	134,345.43
Total Personnel Services – Salaries			\$134,345.43	\$134,345.43
200 <u>Personnel Services – Employee Benefits</u>				
210 Group Insurance – Contracted Provider			1,454.07	1,454.07
220 Social Security Contributions			10,212.60	10,212.60
230 PSERS Retirement Contributions			7,736.61	7,736.61
Total Personnel Services – Employee Benefits			\$19,403.28	\$19,403.28
300 <u>Purchased Professional and Technical Services</u>				
322 Professional Educational Services – Ius			9,047.00	9,047.00
323 Professional Educational Services – Other Educational Agencies			4,000.00	4,000.00
Total Purchased Professional and Technical Services			\$13,047.00	\$13,047.00
500 <u>Other Purchased Services</u>				
510 Student Transportation Services			38.62	38.62
Total Other Purchased Services			\$38.62	\$38.62
600 <u>Supplies</u>				
610 General Supplies			14,807.91	14,807.91
640 Books and Periodicals			52,834.49	52,834.49
650 Supplies & Fees – Technology Related			349.99	349.99
Total Supplies			\$67,992.39	\$67,992.39
700 <u>Property</u>				
758 Capitalized Technology Software - Original			22,538.42	22,538.42
Total Property			\$22,538.42	\$22,538.42
800 <u>Other Objects</u>				
810 Dues and Fees			2,825.00	2,825.00
Total Other Objects			\$2,825.00	\$2,825.00
Total 1190 Federally-Funded Regular Programs			\$260,190.14	\$260,190.14

LEA : 103028302 Shaler Area SD

Printed 12/11/2023 3:04:03 PM

General Fund (10)				
1200 Special Programs – Elementary / Secondary	<u>Elementary</u>	<u>Secondary</u>	<u>Federal</u>	<u>Total</u>
100 <u>Personnel Services – Salaries</u>				
100 Personnel Services – Salaries	3,271,281.48	2,449,233.17	652,733.07	6,373,247.72
Total Personnel Services – Salaries	\$3,271,281.48	\$2,449,233.17	\$652,733.07	\$6,373,247.72
200 <u>Personnel Services – Employee Benefits</u>				
210 Group Insurance – Contracted Provider	864,327.60	617,247.28	148,419.54	1,629,994.42
220 Social Security Contributions	242,027.18	151,399.01	85,893.91	479,320.10
230 PSERS Retirement Contributions	1,231,798.24	996,026.59	15,202.75	2,243,027.58
Total Personnel Services – Employee Benefits	\$2,338,153.02	\$1,764,672.88	\$249,516.20	\$4,352,342.10
300 <u>Purchased Professional and Technical Services</u>				
322 Professional Educational Services – Ius	427,582.17	251,069.88	4,550.00	683,202.05
323 Professional Educational Services – Other Educational Agencies	22,016.00	145,036.80	35,484.50	202,537.30
329 Professional Educational Services – Other	87,260.50	92,420.50	1,000.00	180,681.00
Total Purchased Professional and Technical Services	\$536,858.67	\$488,527.18	\$41,034.50	\$1,066,420.35
500 <u>Other Purchased Services</u>				
510 Student Transportation Services	1,222.24	4,894.33	2,983.26	9,099.83
561 Tuition To Other School Districts Within the State	11,825.00	18,493.25	40,700.00	71,018.25
562 Tuition To Pennsylvania Charter Schools	416,752.97	394,950.49		811,703.46
563 Tuition To Nonpublic Schools	178,597.92	496,259.42		674,857.34
567 Tuition To Approved Private Schools (APS) and PA Chartered Schools for the Deaf and Blind	462,255.68	330,482.43		792,738.11
568 Tuition To Private Residential Rehabilitative Institutions (PRRI) [In-State] and Detention Centers	6,946.25	27,824.00		34,770.25
569 Tuition – Other		147,379.96		147,379.96
580 Travel	454.95			454.95
594 IU Payment By Withholding for Institutionalized Children's Programs – Special Classes	563.83	563.83		1,127.66
599 Other Miscellaneous Purchased Services	1,500.00	1,500.00		3,000.00
Total Other Purchased Services	\$1,080,118.84	\$1,422,347.71	\$43,683.26	\$2,546,149.81
600 <u>Supplies</u>				
610 General Supplies	14,755.66	23,040.18		37,795.84
640 Books and Periodicals		192.24		192.24
650 Supplies & Fees – Technology Related	35,241.75			35,241.75
Total Supplies	\$49,997.41	\$23,232.42		\$73,229.83
700 <u>Property</u>				
752 Capital Equipment – Original and Additional	3,916.38	1,094.99	8,180.00	13,191.37
Total Property	\$3,916.38	\$1,094.99	\$8,180.00	\$13,191.37
800 <u>Other Objects</u>				
810 Dues and Fees		930.00	1,518.00	2,448.00
Total Other Objects		\$930.00	\$1,518.00	\$2,448.00
Total 1200 Special Programs – Elementary / Secondary	\$7,280,325.80	\$6,150,038.35	\$996,665.03	\$14,427,029.18

LEA : 103028302 Shaler Area SD

Printed 12/11/2023 3:04:03 PM

General Fund (10)

1210 Life Skills Support

	<u>Elementary</u>	<u>Secondary</u>	<u>Federal</u>	<u>Total</u>
100 <u>Personnel Services – Salaries</u>				
100 Personnel Services – Salaries	61,640.88	350,928.01	48,805.37	461,374.26
Total Personnel Services – Salaries	\$61,640.88	\$350,928.01	\$48,805.37	\$461,374.26
200 <u>Personnel Services – Employee Benefits</u>				
210 Group Insurance – Contracted Provider	7,950.44	115,972.59	725.30	124,648.33
220 Social Security Contributions	4,637.57	26,114.44	3,645.18	34,397.19
230 PSERS Retirement Contributions	20,064.10	138,962.10	(1.23)	159,024.97
Total Personnel Services – Employee Benefits	\$32,652.11	\$281,049.13	\$4,369.25	\$318,070.49
300 <u>Purchased Professional and Technical Services</u>				
322 Professional Educational Services – Ius		73,683.55		73,683.55
Total Purchased Professional and Technical Services		\$73,683.55		\$73,683.55
500 <u>Other Purchased Services</u>				
510 Student Transportation Services			2,983.26	2,983.26
569 Tuition – Other		79,650.00		79,650.00
Total Other Purchased Services		\$79,650.00	\$2,983.26	\$82,633.26
600 <u>Supplies</u>				
610 General Supplies	5,254.15	13,040.08		18,294.23
Total Supplies	\$5,254.15	\$13,040.08		\$18,294.23
700 <u>Property</u>				
752 Capital Equipment – Original and Additional		1,094.99	8,180.00	9,274.99
Total Property		\$1,094.99	\$8,180.00	\$9,274.99
800 <u>Other Objects</u>				
810 Dues and Fees		200.00		200.00
Total Other Objects		\$200.00		\$200.00
Total 1210 Life Skills Support	\$99,547.14	\$799,645.76	\$64,337.88	\$963,530.78

LEA : 103028302 Shaler Area SD

Printed 12/11/2023 3:04:03 PM

General Fund (10)				
1220 Sensory Support	<u>Elementary</u>	<u>Secondary</u>	<u>Federal</u>	<u>Total</u>
100 <u>Personnel Services – Salaries</u>				
100 Personnel Services – Salaries	390,719.67	97,584.85	33,389.00	521,693.52
Total Personnel Services – Salaries	\$390,719.67	\$97,584.85	\$33,389.00	\$521,693.52
200 <u>Personnel Services – Employee Benefits</u>				
210 Group Insurance – Contracted Provider	94,251.22	21,799.42	3,048.00	119,098.64
220 Social Security Contributions	29,281.95	7,288.79	2,309.00	38,879.74
230 PSERS Retirement Contributions	149,397.75	34,408.37		183,806.12
Total Personnel Services – Employee Benefits	\$272,930.92	\$63,496.58	\$5,357.00	\$341,784.50
300 <u>Purchased Professional and Technical Services</u>				
322 Professional Educational Services – Ius	231,737.50	71,801.22		303,538.72
323 Professional Educational Services – Other Educational Agencies			26,435.50	26,435.50
Total Purchased Professional and Technical Services	\$231,737.50	\$71,801.22	\$26,435.50	\$329,974.22
600 <u>Supplies</u>				
610 General Supplies	997.70	398.60		1,396.30
Total Supplies	\$997.70	\$398.60		\$1,396.30
700 <u>Property</u>				
752 Capital Equipment – Original and Additional	3,319.13			3,319.13
Total Property	\$3,319.13			\$3,319.13
800 <u>Other Objects</u>				
810 Dues and Fees			1,518.00	1,518.00
Total Other Objects			\$1,518.00	\$1,518.00
Total 1220 Sensory Support	\$899,704.92	\$233,281.25	\$66,699.50	\$1,199,685.67

LEA : 103028302 Shaler Area SD

Printed 12/11/2023 3:04:03 PM

General Fund (10)				
1230 Emotional Support	<u>Elementary</u>	<u>Secondary</u>	<u>Federal</u>	<u>Total</u>
100 <u>Personnel Services – Salaries</u>				
100 Personnel Services – Salaries	132,190.97	346,201.73		478,392.70
Total Personnel Services – Salaries	\$132,190.97	\$346,201.73		\$478,392.70
200 <u>Personnel Services – Employee Benefits</u>				
210 Group Insurance – Contracted Provider	28,405.21	58,661.32		87,066.53
220 Social Security Contributions	9,882.47	25,975.76		35,858.23
230 PSERS Retirement Contributions	46,561.52	121,046.41		167,607.93
Total Personnel Services – Employee Benefits	\$84,849.20	\$205,683.49		\$290,532.69
300 <u>Purchased Professional and Technical Services</u>				
323 Professional Educational Services – Other Educational Agencies	22,016.00	145,036.80	9,049.00	176,101.80
Total Purchased Professional and Technical Services	\$22,016.00	\$145,036.80	\$9,049.00	\$176,101.80
500 <u>Other Purchased Services</u>				
561 Tuition To Other School Districts Within the State	11,825.00	18,493.25	28,000.00	58,318.25
563 Tuition To Nonpublic Schools	178,597.92	496,259.42		674,857.34
568 Tuition To Private Residential Rehabilitative Institutions (PRRI) [In-State] and Detention Centers	6,946.25	27,824.00		34,770.25
569 Tuition – Other		2,775.00		2,775.00
Total Other Purchased Services	\$197,369.17	\$545,351.67	\$28,000.00	\$770,720.84
600 <u>Supplies</u>				
610 General Supplies		982.28		982.28
Total Supplies		\$982.28		\$982.28
Total 1230 Emotional Support	\$436,425.34	\$1,243,255.97	\$37,049.00	\$1,716,730.31

LEA : 103028302 Shaler Area SD

Printed 12/11/2023 3:04:03 PM

General Fund (10)				
1240 Academic Support	Elementary	Secondary	Federal	Total
100 Personnel Services – Salaries				
100 Personnel Services – Salaries	2,561,667.74	1,547,752.18	570,538.70	4,679,958.62
Total Personnel Services – Salaries	\$2,561,667.74	\$1,547,752.18	\$570,538.70	\$4,679,958.62
200 Personnel Services – Employee Benefits				
210 Group Insurance – Contracted Provider	712,269.25	388,772.99	142,989.32	1,244,031.56
220 Social Security Contributions	188,862.81	84,146.93	79,939.73	352,949.47
230 PSERS Retirement Contributions	971,739.56	665,507.63	15,203.98	1,652,451.17
Total Personnel Services – Employee Benefits	\$1,872,871.62	\$1,138,427.55	\$238,133.03	\$3,249,432.20
500 Other Purchased Services				
510 Student Transportation Services	380.88	3,870.08		4,250.96
562 Tuition To Pennsylvania Charter Schools	416,752.97	394,950.49		811,703.46
580 Travel	454.95			454.95
Total Other Purchased Services	\$417,588.80	\$398,820.57		\$816,409.37
600 Supplies				
610 General Supplies	4,028.51	4,143.92		8,172.43
640 Books and Periodicals		192.24		192.24
Total Supplies	\$4,028.51	\$4,336.16		\$8,364.67
700 Property				
752 Capital Equipment – Original and Additional	597.25			597.25
Total Property	\$597.25			\$597.25
800 Other Objects				
810 Dues and Fees		730.00		730.00
Total Other Objects		\$730.00		\$730.00
Total 1240 Academic Support	\$4,856,753.92	\$3,090,066.46	\$808,671.73	\$8,755,492.11

LEA : 103028302 Shaler Area SD

Printed 12/11/2023 3:04:03 PM

General Fund (10)

1241 Learning Support – Public	Elementary	Secondary	Federal	Total
100 <u>Personnel Services – Salaries</u>				
100 Personnel Services – Salaries	2,379,125.77	1,249,007.30	570,538.70	4,198,671.77
Total Personnel Services – Salaries	\$2,379,125.77	\$1,249,007.30	\$570,538.70	\$4,198,671.77
200 <u>Personnel Services – Employee Benefits</u>				
210 Group Insurance – Contracted Provider	668,686.73	323,192.35	142,989.32	1,134,868.40
220 Social Security Contributions	175,239.81	61,916.38	79,939.73	317,095.92
230 PSERS Retirement Contributions	907,391.51	560,170.19	15,203.98	1,482,765.68
Total Personnel Services – Employee Benefits	\$1,751,318.05	\$945,278.92	\$238,133.03	\$2,934,730.00
500 <u>Other Purchased Services</u>				
562 Tuition To Pennsylvania Charter Schools	416,752.97	394,950.49		811,703.46
Total Other Purchased Services	\$416,752.97	\$394,950.49		\$811,703.46
600 <u>Supplies</u>				
610 General Supplies	2,919.33	4,057.16		6,976.49
640 Books and Periodicals		192.24		192.24
Total Supplies	\$2,919.33	\$4,249.40		\$7,168.73
700 <u>Property</u>				
752 Capital Equipment – Original and Additional	597.25			597.25
Total Property	\$597.25			\$597.25
Total 1241 Learning Support – Public	\$4,550,713.37	\$2,593,486.11	\$808,671.73	\$7,952,871.21

LEA : 103028302 Shaler Area SD

Printed 12/11/2023 3:04:03 PM

General Fund (10)

1243 Gifted Support

	<u>Elementary</u>	<u>Secondary</u>	<u>Federal</u>	<u>Total</u>
100 <u>Personnel Services – Salaries</u>				
100 Personnel Services – Salaries	182,541.97	298,744.88		481,286.85
Total Personnel Services – Salaries	\$182,541.97	\$298,744.88		\$481,286.85
200 <u>Personnel Services – Employee Benefits</u>				
210 Group Insurance – Contracted Provider	43,582.52	65,580.64		109,163.16
220 Social Security Contributions	13,623.00	22,230.55		35,853.55
230 PSERS Retirement Contributions	64,348.05	105,337.44		169,685.49
Total Personnel Services – Employee Benefits	\$121,553.57	\$193,148.63		\$314,702.20
500 <u>Other Purchased Services</u>				
510 Student Transportation Services	380.88	3,870.08		4,250.96
580 Travel	454.95			454.95
Total Other Purchased Services	\$835.83	\$3,870.08		\$4,705.91
600 <u>Supplies</u>				
610 General Supplies	1,109.18	86.76		1,195.94
Total Supplies	\$1,109.18	\$86.76		\$1,195.94
800 <u>Other Objects</u>				
810 Dues and Fees		730.00		730.00
Total Other Objects		\$730.00		\$730.00
Total 1243 Gifted Support	\$306,040.55	\$496,580.35		\$802,620.90

LEA : 103028302 Shaler Area SD

Printed 12/11/2023 3:04:03 PM

General Fund (10)

1260 Physical Support

	<u>Elementary</u>	<u>Secondary</u>	<u>Federal</u>	<u>Total</u>
300 <u>Purchased Professional and Technical Services</u>				
322 Professional Educational Services – lus	106,052.75	98,246.42		204,299.17
Total Purchased Professional and Technical Services	\$106,052.75	\$98,246.42		\$204,299.17
Total 1260 Physical Support	\$106,052.75	\$98,246.42		\$204,299.17

LEA : 103028302 Shaler Area SD

Printed 12/11/2023 3:04:03 PM

General Fund (10)

1270 Multi-Handicapped Support	<u>Elementary</u>	<u>Secondary</u>	<u>Federal</u>	<u>Total</u>
500 <u>Other Purchased Services</u>				
567 Tuition To Approved Private Schools (APS) and PA Chartered Schools for the Deaf and Blind	131,773.25			131,773.25
Total Other Purchased Services	\$131,773.25			\$131,773.25
Total 1270 Multi-Handicapped Support	\$131,773.25			\$131,773.25

LEA : 103028302 Shaler Area SD

Printed 12/11/2023 3:04:03 PM

General Fund (10)

1280 Early Intervention Support

	<u>Elementary</u>	<u>Secondary</u>	<u>Federal</u>	<u>Total</u>
300 <u>Purchased Professional and Technical Services</u>				
322 Professional Educational Services – lus	24,043.03			24,043.03
Total Purchased Professional and Technical Services	\$24,043.03			\$24,043.03
Total 1280 Early Intervention Support	\$24,043.03			\$24,043.03

LEA : 103028302 Shaler Area SD

Printed 12/11/2023 3:04:03 PM

General Fund (10)				
1290 Special Programs - Other Support	<u>Elementary</u>	<u>Secondary</u>	<u>Federal</u>	<u>Total</u>
100 <u>Personnel Services – Salaries</u>				
100 Personnel Services – Salaries	125,062.22	106,766.40		231,828.62
Total Personnel Services – Salaries	\$125,062.22	\$106,766.40		\$231,828.62
200 <u>Personnel Services – Employee Benefits</u>				
210 Group Insurance – Contracted Provider	21,451.48	32,040.96	1,656.92	55,149.36
220 Social Security Contributions	9,362.38	7,873.09		17,235.47
230 PSERS Retirement Contributions	44,035.31	36,102.08		80,137.39
Total Personnel Services – Employee Benefits	\$74,849.17	\$76,016.13	\$1,656.92	\$152,522.22
300 <u>Purchased Professional and Technical Services</u>				
322 Professional Educational Services – Ius	65,748.89	7,338.69	4,550.00	77,637.58
329 Professional Educational Services – Other	87,260.50	92,420.50	1,000.00	180,681.00
Total Purchased Professional and Technical Services	\$153,009.39	\$99,759.19	\$5,550.00	\$258,318.58
500 <u>Other Purchased Services</u>				
510 Student Transportation Services	841.36	1,024.25		1,865.61
561 Tuition To Other School Districts Within the State			12,700.00	12,700.00
567 Tuition To Approved Private Schools (APS) and PA Chartered Schools for the Deaf and Blind	330,482.43	330,482.43		660,964.86
569 Tuition – Other		64,954.96		64,954.96
594 IU Payment By Withholding for Institutionalized Children's Programs – Special Classes	563.83	563.83		1,127.66
599 Other Miscellaneous Purchased Services	1,500.00	1,500.00		3,000.00
Total Other Purchased Services	\$333,387.62	\$398,525.47	\$12,700.00	\$744,613.09
600 <u>Supplies</u>				
610 General Supplies	4,475.30	4,475.30		8,950.60
650 Supplies & Fees – Technology Related	35,241.75			35,241.75
Total Supplies	\$39,717.05	\$4,475.30		\$44,192.35
Total 1290 Special Programs - Other Support	\$726,025.45	\$685,542.49	\$19,906.92	\$1,431,474.86

LEA : 103028302 Shaler Area SD

Printed 12/11/2023 3:04:03 PM

General Fund (10)

1300 Vocational Education

	<u>Elementary</u>	<u>Secondary</u>	<u>Federal</u>	<u>Total</u>
100 <u>Personnel Services – Salaries</u>				
100 Personnel Services – Salaries		80,441.00		80,441.00
Total Personnel Services – Salaries		\$80,441.00		\$80,441.00
200 <u>Personnel Services – Employee Benefits</u>				
210 Group Insurance – Contracted Provider		200.92		200.92
220 Social Security Contributions		6,153.68		6,153.68
230 PSERS Retirement Contributions		28,323.97		28,323.97
Total Personnel Services – Employee Benefits		\$34,678.57		\$34,678.57
500 <u>Other Purchased Services</u>				
564 Tuition To Career and Technology Centers		1,462,184.20		1,462,184.20
Total Other Purchased Services		\$1,462,184.20		\$1,462,184.20
Total 1300 Vocational Education		\$1,577,303.77		\$1,577,303.77

LEA : 103028302 Shaler Area SD

Printed 12/11/2023 3:04:03 PM

General Fund (10)

1400 Other Instructional Programs – Elementary / Secondary	<u>Elementary</u>	<u>Secondary</u>	<u>Federal</u>	<u>Total</u>
100 <u>Personnel Services – Salaries</u>				
100 Personnel Services – Salaries	298,042.00	429,372.33	252,894.59	980,308.92
Total Personnel Services – Salaries	\$298,042.00	\$429,372.33	\$252,894.59	\$980,308.92
200 <u>Personnel Services – Employee Benefits</u>				
210 Group Insurance – Contracted Provider	50,228.35	86,837.78	51,045.77	188,111.90
220 Social Security Contributions	22,365.36	32,011.96	18,868.22	73,245.54
230 PSERS Retirement Contributions	105,041.57	151,279.25	87,626.96	343,947.78
Total Personnel Services – Employee Benefits	\$177,635.28	\$270,128.99	\$157,540.95	\$605,305.22
500 <u>Other Purchased Services</u>				
568 Tuition To Private Residential Rehabilitative Institutions (PRRI) [In-State] and Detention Centers		9,305.98		9,305.98
569 Tuition – Other		68,824.00		68,824.00
Total Other Purchased Services		\$78,129.98		\$78,129.98
Total 1400 Other Instructional Programs – Elementary / Secondary	\$475,677.28	\$777,631.30	\$410,435.54	\$1,663,744.12

LEA : 103028302 Shaler Area SD

Printed 12/11/2023 3:04:03 PM

General Fund (10)

1420 Summer School	<u>Elementary</u>	<u>Secondary</u>	<u>Federal</u>	<u>Total</u>
100 <u>Personnel Services – Salaries</u>				
100 Personnel Services – Salaries	189.00		25,924.75	26,113.75
Total Personnel Services – Salaries	\$189.00		\$25,924.75	\$26,113.75
200 <u>Personnel Services – Employee Benefits</u>				
220 Social Security Contributions	14.46		1,976.76	1,991.22
230 PSERS Retirement Contributions	66.64		7,678.35	7,744.99
Total Personnel Services – Employee Benefits	\$81.10		\$9,655.11	\$9,736.21
Total 1420 Summer School	\$270.10		\$35,579.86	\$35,849.96

LEA : 103028302 Shaler Area SD

Printed 12/11/2023 3:04:03 PM

General Fund (10)

1440 Alternative Regular Education Programs	<u>Elementary</u>	<u>Secondary</u>	<u>Federal</u>	<u>Total</u>
100 <u>Personnel Services – Salaries</u>				
100 Personnel Services – Salaries		429,372.33		429,372.33
Total Personnel Services – Salaries		\$429,372.33		\$429,372.33
200 <u>Personnel Services – Employee Benefits</u>				
210 Group Insurance – Contracted Provider		86,837.78		86,837.78
220 Social Security Contributions		32,011.96		32,011.96
230 PSERS Retirement Contributions		151,279.25		151,279.25
Total Personnel Services – Employee Benefits		\$270,128.99		\$270,128.99
500 <u>Other Purchased Services</u>				
568 Tuition To Private Residential Rehabilitative Institutions (PRRI) [In-State] and Detention Centers		9,305.98		9,305.98
569 Tuition – Other		68,824.00		68,824.00
Total Other Purchased Services		\$78,129.98		\$78,129.98
Total 1440 Alternative Regular Education Programs		\$777,631.30		\$777,631.30

LEA : 103028302 Shaler Area SD

Printed 12/11/2023 3:04:03 PM

General Fund (10)

1441 Adjudicated / Court-Placed Programs	<u>Elementary</u>	<u>Secondary</u>	<u>Federal</u>	<u>Total</u>
500 <u>Other Purchased Services</u>				
568 Tuition To Private Residential Rehabilitative Institutions (PRRI) [In-State] and Detention Centers		9,305.98		9,305.98
Total Other Purchased Services		\$9,305.98		\$9,305.98
Total 1441 Adjudicated / Court-Placed Programs		\$9,305.98		\$9,305.98

LEA : 103028302 Shaler Area SD

Printed 12/11/2023 3:04:03 PM

General Fund (10)

1442 Alternative Education Programs	<u>Elementary</u>	<u>Secondary</u>	<u>Federal</u>	<u>Total</u>
100 <u>Personnel Services – Salaries</u>				
100 Personnel Services – Salaries		429,372.33		429,372.33
Total Personnel Services – Salaries		\$429,372.33		\$429,372.33
200 <u>Personnel Services – Employee Benefits</u>				
210 Group Insurance – Contracted Provider		86,837.78		86,837.78
220 Social Security Contributions		32,011.96		32,011.96
230 PSERS Retirement Contributions		151,279.25		151,279.25
Total Personnel Services – Employee Benefits		\$270,128.99		\$270,128.99
500 <u>Other Purchased Services</u>				
569 Tuition – Other		68,824.00		68,824.00
Total Other Purchased Services		\$68,824.00		\$68,824.00
Total 1442 Alternative Education Programs		\$768,325.32		\$768,325.32

LEA : 103028302 Shaler Area SD

Printed 12/11/2023 3:04:03 PM

General Fund (10)

1490 Additional Other Instructional Programs	<u>Elementary</u>	<u>Secondary</u>	<u>Federal</u>	<u>Total</u>
100 <u>Personnel Services – Salaries</u>				
100 Personnel Services – Salaries	297,853.00		226,969.84	524,822.84
Total Personnel Services – Salaries	\$297,853.00		\$226,969.84	\$524,822.84
200 <u>Personnel Services – Employee Benefits</u>				
210 Group Insurance – Contracted Provider	50,228.35		51,045.77	101,274.12
220 Social Security Contributions	22,350.90		16,891.46	39,242.36
230 PSERS Retirement Contributions	104,974.93		79,948.61	184,923.54
Total Personnel Services – Employee Benefits	\$177,554.18		\$147,885.84	\$325,440.02
Total 1490 Additional Other Instructional Programs	\$475,407.18		\$374,855.68	\$850,262.86

LEA : 103028302 Shaler Area SD

Printed 12/11/2023 3:04:03 PM

General Fund (10)

1500 Nonpublic School Programs

	<u>Elementary</u>	<u>Secondary</u>	<u>Federal</u>	<u>Total</u>
300 <u>Purchased Professional and Technical Services</u>				
322 Professional Educational Services – lus			4,236.00	4,236.00
Total Purchased Professional and Technical Services			\$4,236.00	\$4,236.00
Total 1500 Nonpublic School Programs			\$4,236.00	\$4,236.00

LEA : 103028302 Shaler Area SD

Printed 12/11/2023 3:04:05 PM

General Fund (10)

2000 Support Services

Total

100	<u>Personnel Services – Salaries</u>	
100	Personnel Services – Salaries	10,040,331.13
Total Personnel Services – Salaries		\$10,040,331.13
200	<u>Personnel Services – Employee Benefits</u>	
210	Group Insurance – Contracted Provider	2,225,615.09
220	Social Security Contributions	746,784.85
230	PSERS Retirement Contributions	3,487,002.04
280	Other Post-Employment Benefits (OPEB)	1,736.68
Total Personnel Services – Employee Benefits		\$6,461,138.66
300	<u>Purchased Professional and Technical Services</u>	
322	Professional Educational Services – Ius	18,000.00
323	Professional Educational Services – Other Educational Agencies	144,840.80
330	Other Professional Services	795,613.68
340	Technical Services	2,905.00
350	Security / Safety Services	530,146.75
360	Employee Training and Development Services	74,125.37
390	Other Purchased Professional and Technical Services	3,565.75
Total Purchased Professional and Technical Services		\$1,569,197.35
400	<u>Purchased Property Services</u>	
410	Cleaning Services	60,811.29
420	Utility Services	137,962.46
430	Repairs and Maintenance Services	604,973.64
440	Rentals	116,471.94
Total Purchased Property Services		\$920,219.33
500	<u>Other Purchased Services</u>	
510	Student Transportation Services	238.62
513	Contracted Carriers	3,597,189.29
516	Student Transportation Services From the IU	12.30
520	Insurance – General	47,105.28
521	Fire Insurance	152,841.00
522	Automotive Liability Insurance	6,836.00
529	Other Insurance	203.50
530	Communications	95,264.82
549	Other Advertising/Public Relations	13,022.80
580	Travel	56,572.82
591	Services Purchased Locally	1,581.00
595	IU Payments By Withholding	61,632.21
Total Other Purchased Services		\$4,032,499.64
600	<u>Supplies</u>	
610	General Supplies	491,512.36
620	Energy	1,342,215.09
640	Books and Periodicals	111,047.40
650	Supplies & Fees – Technology Related	154,651.15

LEA : 103028302 Shaler Area SD

Printed 12/11/2023 3:04:05 PM

General Fund (10)

2000 Support Services

	<u>Total</u>
Total Supplies	\$2,099,426.00
700 <u>Property</u>	
752 Capital Equipment – Original and Additional	(9,232.76)
756 Capitalized Technology Equipment – Original	2,800.00
758 Capitalized Technology Software - Original	1,998.77
762 Capitalized Equipment - Replacement	129,815.74
766 Capitalized Technology Equipment – Replacement	8,163.30
768 Capitalized Technology Software - Replacement	24,371.19
Total Property	\$157,916.24
800 <u>Other Objects</u>	
810 Dues and Fees	51,009.93
820 Claims and Judgments Against the LEA	4,258.15
Total Other Objects	\$55,268.08
Total 2000 Support Services	\$25,335,996.43

LEA : 103028302 Shaler Area SD

Printed 12/11/2023 3:04:05 PM

General Fund (10)

2100 Support Services – Students	<u>Elementary</u>	<u>Secondary</u>	<u>Federal</u>	<u>Total</u>
100 <u>Personnel Services – Salaries</u>				
100 Personnel Services – Salaries	892,178.72	1,038,599.53	94,063.38	2,552,893.12
Total Personnel Services – Salaries	\$892,178.72	\$1,038,599.53	\$94,063.38	\$2,552,893.12
200 <u>Personnel Services – Employee Benefits</u>				
210 Group Insurance – Contracted Provider	207,306.60	217,532.11	22,421.57	548,121.23
220 Social Security Contributions	66,337.91	77,349.33	6,838.36	190,080.14
230 PSERS Retirement Contributions	324,952.20	364,272.81	22,572.16	897,972.51
Total Personnel Services – Employee Benefits	\$598,596.71	\$659,154.25	\$51,832.09	\$1,636,173.88
300 <u>Purchased Professional and Technical Services</u>				
322 Professional Educational Services – lus			18,000.00	18,000.00
330 Other Professional Services	21,162.50	29,666.34		50,828.84
Total Purchased Professional and Technical Services	\$21,162.50	\$29,666.34	\$18,000.00	\$68,828.84
500 <u>Other Purchased Services</u>				
510 Student Transportation Services			238.62	238.62
580 Travel	916.19	552.91		2,110.15
Total Other Purchased Services	\$916.19	\$552.91	\$238.62	\$2,348.77
600 <u>Supplies</u>				
610 General Supplies	6,990.63	3,084.90	85.26	10,160.79
650 Supplies & Fees – Technology Related			11,656.00	11,656.00
Total Supplies	\$6,990.63	\$3,084.90	\$11,741.26	\$21,816.79
800 <u>Other Objects</u>				
810 Dues and Fees	2,636.00	225.00		3,461.00
Total Other Objects	\$2,636.00	\$225.00		\$3,461.00
Total 2100 Support Services – Students	\$1,522,480.75	\$1,731,282.93	\$175,875.35	\$4,285,522.40

LEA : 103028302 Shaler Area SD

Printed 12/11/2023 3:04:05 PM

General Fund (10)

2110 Supervision of Student Services	Elementary	Secondary	Federal	Total
100 <u>Personnel Services – Salaries</u>				
100 Personnel Services – Salaries	108,236.01	107,735.75		215,971.76
Total Personnel Services – Salaries	\$108,236.01	\$107,735.75		\$215,971.76
200 <u>Personnel Services – Employee Benefits</u>				
210 Group Insurance – Contracted Provider	32,292.58	32,289.40		64,581.98
220 Social Security Contributions	8,052.16	8,013.42		16,065.58
230 PSERS Retirement Contributions	38,164.20	37,987.46		76,151.66
Total Personnel Services – Employee Benefits	\$78,508.94	\$78,290.28		\$156,799.22
500 <u>Other Purchased Services</u>				
580 Travel	657.36			657.36
Total Other Purchased Services	\$657.36			\$657.36
600 <u>Supplies</u>				
610 General Supplies	4,157.51	1,472.60		5,630.11
650 Supplies & Fees – Technology Related			11,656.00	11,656.00
Total Supplies	\$4,157.51	\$1,472.60	\$11,656.00	\$17,286.11
800 <u>Other Objects</u>				
810 Dues and Fees	2,196.00			2,196.00
Total Other Objects	\$2,196.00			\$2,196.00
Total 2110 Supervision of Student Services	\$193,755.82	\$187,498.63	\$11,656.00	\$392,910.45

LEA : 103028302 Shaler Area SD

Printed 12/11/2023 3:04:05 PM

General Fund (10)				
2111 Supervision of Student Services – Head of Component	<u>Elementary</u>	<u>Secondary</u>	<u>Federal</u>	<u>Total</u>
100 <u>Personnel Services – Salaries</u>				
100 Personnel Services – Salaries	108,236.01	107,735.75		215,971.76
Total Personnel Services – Salaries	\$108,236.01	\$107,735.75		\$215,971.76
200 <u>Personnel Services – Employee Benefits</u>				
210 Group Insurance – Contracted Provider	32,292.58	32,289.40		64,581.98
220 Social Security Contributions	8,052.16	8,013.42		16,065.58
230 PSERS Retirement Contributions	38,164.20	37,987.46		76,151.66
Total Personnel Services – Employee Benefits	\$78,508.94	\$78,290.28		\$156,799.22
500 <u>Other Purchased Services</u>				
580 Travel	657.36			657.36
Total Other Purchased Services	\$657.36			\$657.36
600 <u>Supplies</u>				
610 General Supplies	4,157.51	1,472.60		5,630.11
650 Supplies & Fees – Technology Related			11,656.00	11,656.00
Total Supplies	\$4,157.51	\$1,472.60	\$11,656.00	\$17,286.11
800 <u>Other Objects</u>				
810 Dues and Fees	2,196.00			2,196.00
Total Other Objects	\$2,196.00			\$2,196.00
Total 2111 Supervision of Student Services – Head of Component	\$193,755.82	\$187,498.63	\$11,656.00	\$392,910.45

LEA : 103028302 Shaler Area SD

Printed 12/11/2023 3:04:05 PM

General Fund (10)

2120 Guidance Services	Elementary	Secondary	Federal	Total
100 <u>Personnel Services – Salaries</u>				
100 Personnel Services – Salaries	626,756.84	773,678.20	30,047.00	1,430,482.04
Total Personnel Services – Salaries	\$626,756.84	\$773,678.20	\$30,047.00	\$1,430,482.04
200 <u>Personnel Services – Employee Benefits</u>				
210 Group Insurance – Contracted Provider	137,240.10	147,492.87	5,999.00	290,731.97
220 Social Security Contributions	46,594.91	57,645.93	2,027.00	106,267.84
230 PSERS Retirement Contributions	231,363.91	270,861.81		502,225.72
Total Personnel Services – Employee Benefits	\$415,198.92	\$476,000.61	\$8,026.00	\$899,225.53
300 <u>Purchased Professional and Technical Services</u>				
330 Other Professional Services		18,816.34		18,816.34
Total Purchased Professional and Technical Services		\$18,816.34		\$18,816.34
600 <u>Supplies</u>				
610 General Supplies	341.42	654.96	85.26	1,081.64
Total Supplies	\$341.42	\$654.96	\$85.26	\$1,081.64
Total 2120 Guidance Services	\$1,042,297.18	\$1,269,150.11	\$38,158.26	\$2,349,605.55

LEA : 103028302 Shaler Area SD

Printed 12/11/2023 3:04:05 PM

General Fund (10)

2140 Psychological Services	Elementary	Secondary	Federal	Total
100 Personnel Services – Salaries				
100 Personnel Services – Salaries	157,185.87	157,185.58		314,371.45
Total Personnel Services – Salaries	\$157,185.87	\$157,185.58		\$314,371.45
200 Personnel Services – Employee Benefits				
210 Group Insurance – Contracted Provider	37,773.92	37,749.84	10,837.06	86,360.82
220 Social Security Contributions	11,690.84	11,689.98		23,380.82
230 PSERS Retirement Contributions	55,424.09	55,423.54		110,847.63
Total Personnel Services – Employee Benefits	\$104,888.85	\$104,863.36	\$10,837.06	\$220,589.27
300 Purchased Professional and Technical Services				
330 Other Professional Services	21,162.50	10,850.00		32,012.50
Total Purchased Professional and Technical Services	\$21,162.50	\$10,850.00		\$32,012.50
500 Other Purchased Services				
580 Travel	258.83	552.91		811.74
Total Other Purchased Services	\$258.83	\$552.91		\$811.74
600 Supplies				
610 General Supplies	2,491.70	957.34		3,449.04
Total Supplies	\$2,491.70	\$957.34		\$3,449.04
800 Other Objects				
810 Dues and Fees	440.00	225.00		665.00
Total Other Objects	\$440.00	\$225.00		\$665.00
Total 2140 Psychological Services	\$286,427.75	\$274,634.19	\$10,837.06	\$571,899.00

LEA : 103028302 Shaler Area SD

Printed 12/11/2023 3:04:05 PM

General Fund (10)

2160 Social Work Services

	<u>Elementary</u>	<u>Secondary</u>	<u>Federal</u>	<u>Total</u>
100 <u>Personnel Services – Salaries</u>				
100 Personnel Services – Salaries			64,016.38	488,027.07
Total Personnel Services – Salaries			\$64,016.38	\$488,027.07
200 <u>Personnel Services – Employee Benefits</u>				
210 Group Insurance – Contracted Provider			5,585.51	72,687.34
220 Social Security Contributions			4,811.36	36,662.45
230 PSERS Retirement Contributions			22,572.16	172,062.68
Total Personnel Services – Employee Benefits			\$32,969.03	\$281,412.47
500 <u>Other Purchased Services</u>				
580 Travel				641.05
Total Other Purchased Services				\$641.05
800 <u>Other Objects</u>				
810 Dues and Fees				600.00
Total Other Objects				\$600.00
Total 2160 Social Work Services			\$96,985.41	\$770,680.59

LEA : 103028302 Shaler Area SD

Printed 12/11/2023 3:04:05 PM

General Fund (10)

2170 Student Accounting Services	<u>Elementary</u>	<u>Secondary</u>	<u>Federal</u>	<u>Total</u>
100 <u>Personnel Services – Salaries</u>				
100 Personnel Services – Salaries				104,040.80
Total Personnel Services – Salaries				\$104,040.80
200 <u>Personnel Services – Employee Benefits</u>				
210 Group Insurance – Contracted Provider				33,759.12
220 Social Security Contributions				7,703.45
230 PSERS Retirement Contributions				36,684.82
Total Personnel Services – Employee Benefits				\$78,147.39
Total 2170 Student Accounting Services				\$182,188.19

LEA : 103028302 Shaler Area SD

Printed 12/11/2023 3:04:05 PM

General Fund (10)

2190 Other Student Services	<u>Elementary</u>	<u>Secondary</u>	<u>Federal</u>	<u>Total</u>
300 <u>Purchased Professional and Technical Services</u>				
322 Professional Educational Services – lus			18,000.00	18,000.00
Total Purchased Professional and Technical Services			\$18,000.00	\$18,000.00
500 <u>Other Purchased Services</u>				
510 Student Transportation Services			238.62	238.62
Total Other Purchased Services			\$238.62	\$238.62
Total 2190 Other Student Services			\$18,238.62	\$18,238.62

LEA : 103028302 Shaler Area SD

Printed 12/11/2023 3:04:05 PM

General Fund (10)

2200 Support Services – Instructional Staff	Elementary	Secondary	Federal	Total
100 Personnel Services – Salaries				
100 Personnel Services – Salaries	413,941.57	379,809.62		793,751.19
Total Personnel Services – Salaries	\$413,941.57	\$379,809.62		\$793,751.19
200 Personnel Services – Employee Benefits				
210 Group Insurance – Contracted Provider	67,949.53	42,191.42		110,140.95
220 Social Security Contributions	30,920.21	28,367.71		59,287.92
230 PSERS Retirement Contributions	145,582.29	133,480.25		279,062.54
Total Personnel Services – Employee Benefits	\$244,452.03	\$204,039.38		\$448,491.41
300 Purchased Professional and Technical Services				
340 Technical Services	2,905.00			2,905.00
360 Employee Training and Development Services	3,445.12	3,076.13	52,770.00	59,291.25
Total Purchased Professional and Technical Services	\$6,350.12	\$3,076.13	\$52,770.00	\$62,196.25
400 Purchased Property Services				
430 Repairs and Maintenance Services	234.22			234.22
Total Purchased Property Services	\$234.22			\$234.22
500 Other Purchased Services				
580 Travel	4,965.61	10,485.28	450.00	15,900.89
Total Other Purchased Services	\$4,965.61	\$10,485.28	\$450.00	\$15,900.89
600 Supplies				
610 General Supplies	5,610.85	2,982.41	(10,881.67)	(2,288.41)
640 Books and Periodicals	67,774.66	43,272.74		111,047.40
650 Supplies & Fees – Technology Related	18,390.11	5,926.17		24,316.28
Total Supplies	\$91,775.62	\$52,181.32	(\$10,881.67)	\$133,075.27
700 Property				
758 Capitalized Technology Software - Original	999.87	998.90		1,998.77
768 Capitalized Technology Software - Replacement	199.75	1,000.00		1,199.75
Total Property	\$1,199.62	\$1,998.90		\$3,198.52
Total 2200 Support Services – Instructional Staff	\$762,918.79	\$651,590.63	\$42,338.33	\$1,456,847.75

LEA : 103028302 Shaler Area SD

Printed 12/11/2023 3:04:05 PM

General Fund (10)

2220 Technology Support Services	<u>Elementary</u>	<u>Secondary</u>	<u>Federal</u>	<u>Total</u>
100 <u>Personnel Services – Salaries</u>				
100 Personnel Services – Salaries		5,801.00		5,801.00
Total Personnel Services – Salaries		\$5,801.00		\$5,801.00
200 <u>Personnel Services – Employee Benefits</u>				
220 Social Security Contributions		428.34		428.34
230 PSERS Retirement Contributions		2,045.44		2,045.44
Total Personnel Services – Employee Benefits		\$2,473.78		\$2,473.78
Total 2220 Technology Support Services		\$8,274.78		\$8,274.78

LEA : 103028302 Shaler Area SD

Printed 12/11/2023 3:04:05 PM

General Fund (10)

2240 Computer-Assisted Instruction Support Services	<u>Elementary</u>	<u>Secondary</u>	<u>Federal</u>	<u>Total</u>
100 <u>Personnel Services – Salaries</u>				
100 Personnel Services – Salaries	14,579.76	12,931.95		27,511.71
Total Personnel Services – Salaries	\$14,579.76	\$12,931.95		\$27,511.71
200 <u>Personnel Services – Employee Benefits</u>				
220 Social Security Contributions	1,098.38	974.82		2,073.20
230 PSERS Retirement Contributions	5,140.88	4,559.84		9,700.72
Total Personnel Services – Employee Benefits	\$6,239.26	\$5,534.66		\$11,773.92
Total 2240 Computer-Assisted Instruction Support Services	\$20,819.02	\$18,466.61		\$39,285.63

LEA : 103028302 Shaler Area SD

Printed 12/11/2023 3:04:05 PM

General Fund (10)

2250 School Library Services	<u>Elementary</u>	<u>Secondary</u>	<u>Federal</u>	<u>Total</u>
100 <u>Personnel Services – Salaries</u>				
100 Personnel Services – Salaries	237,411.34	201,254.49		438,665.83
Total Personnel Services – Salaries	\$237,411.34	\$201,254.49		\$438,665.83
200 <u>Personnel Services – Employee Benefits</u>				
210 Group Insurance – Contracted Provider	61,004.82	35,246.81		96,251.63
220 Social Security Contributions	17,678.26	14,963.84		32,642.10
230 PSERS Retirement Contributions	83,690.11	70,873.78		154,563.89
Total Personnel Services – Employee Benefits	\$162,373.19	\$121,084.43		\$283,457.62
300 <u>Purchased Professional and Technical Services</u>				
340 Technical Services	2,905.00			2,905.00
Total Purchased Professional and Technical Services	\$2,905.00			\$2,905.00
400 <u>Purchased Property Services</u>				
430 Repairs and Maintenance Services	234.22			234.22
Total Purchased Property Services	\$234.22			\$234.22
600 <u>Supplies</u>				
610 General Supplies	5,610.85	2,982.41		8,593.26
640 Books and Periodicals	67,774.66	43,272.74		111,047.40
650 Supplies & Fees – Technology Related	18,390.11	5,926.17		24,316.28
Total Supplies	\$91,775.62	\$52,181.32		\$143,956.94
700 <u>Property</u>				
758 Capitalized Technology Software - Original	999.87	998.90		1,998.77
768 Capitalized Technology Software - Replacement	199.75	1,000.00		1,199.75
Total Property	\$1,199.62	\$1,998.90		\$3,198.52
Total 2250 School Library Services	\$495,898.99	\$376,519.14		\$872,418.13

LEA : 103028302 Shaler Area SD

Printed 12/11/2023 3:04:05 PM

General Fund (10)

2260 Instruction and Curriculum Development Services	<u>Elementary</u>	<u>Secondary</u>	<u>Federal</u>	<u>Total</u>
100 <u>Personnel Services – Salaries</u>				
100 Personnel Services – Salaries	158,861.25	158,104.18		316,965.43
Total Personnel Services – Salaries	\$158,861.25	\$158,104.18		\$316,965.43
200 <u>Personnel Services – Employee Benefits</u>				
210 Group Insurance – Contracted Provider	6,944.71	6,944.61		13,889.32
220 Social Security Contributions	11,911.03	11,872.60		23,783.63
230 PSERS Retirement Contributions	55,662.01	55,395.42		111,057.43
Total Personnel Services – Employee Benefits	\$74,517.75	\$74,212.63		\$148,730.38
Total 2260 Instruction and Curriculum Development Services	\$233,379.00	\$232,316.81		\$465,695.81

LEA : 103028302 Shaler Area SD

Printed 12/11/2023 3:04:05 PM

General Fund (10)				
2270 Instructional Staff Professional Development Services	<u>Elementary</u>	<u>Secondary</u>	<u>Federal</u>	<u>Total</u>
100 <u>Personnel Services – Salaries</u>				
100 Personnel Services – Salaries	3,089.22	1,718.00		4,807.22
Total Personnel Services – Salaries	\$3,089.22	\$1,718.00		\$4,807.22
200 <u>Personnel Services – Employee Benefits</u>				
220 Social Security Contributions	232.54	128.11		360.65
230 PSERS Retirement Contributions	1,089.29	605.77		1,695.06
Total Personnel Services – Employee Benefits	\$1,321.83	\$733.88		\$2,055.71
300 <u>Purchased Professional and Technical Services</u>				
360 Employee Training and Development Services	3,445.12	3,076.13	52,770.00	59,291.25
Total Purchased Professional and Technical Services	\$3,445.12	\$3,076.13	\$52,770.00	\$59,291.25
500 <u>Other Purchased Services</u>				
580 Travel	4,965.61	10,485.28	450.00	15,900.89
Total Other Purchased Services	\$4,965.61	\$10,485.28	\$450.00	\$15,900.89
600 <u>Supplies</u>				
610 General Supplies			(10,881.67)	(10,881.67)
Total Supplies			(\$10,881.67)	(\$10,881.67)
Total 2270 Instructional Staff Professional Development Services	\$12,821.78	\$16,013.29	\$42,338.33	\$71,173.40

LEA : 103028302 Shaler Area SD

Printed 12/11/2023 3:04:05 PM

General Fund (10)

2300 Support Services – Administration	Elementary	Secondary	Federal	Total
100 <u>Personnel Services – Salaries</u>				
100 Personnel Services – Salaries	1,108,045.71	812,677.20		2,220,550.96
Total Personnel Services – Salaries	\$1,108,045.71	\$812,677.20		\$2,220,550.96
200 <u>Personnel Services – Employee Benefits</u>				
210 Group Insurance – Contracted Provider	287,751.26	201,255.62		525,372.77
220 Social Security Contributions	82,770.88	62,442.74		166,254.90
230 PSERS Retirement Contributions	390,446.86	286,594.18		764,575.66
280 Other Post-Employment Benefits (OPEB)				736.68
Total Personnel Services – Employee Benefits	\$760,969.00	\$550,292.54		\$1,456,940.01
300 <u>Purchased Professional and Technical Services</u>				
330 Other Professional Services			800.00	421,760.52
Total Purchased Professional and Technical Services			\$800.00	\$421,760.52
400 <u>Purchased Property Services</u>				
440 Rentals	22,468.32	22,467.96		44,936.28
Total Purchased Property Services	\$22,468.32	\$22,467.96		\$44,936.28
500 <u>Other Purchased Services</u>				
520 Insurance – General				20,583.28
530 Communications	7,522.30	7,522.29		15,044.59
580 Travel	2,760.24	8,528.64	722.24	32,595.80
591 Services Purchased Locally	355.00			1,581.00
Total Other Purchased Services	\$10,637.54	\$16,050.93	\$722.24	\$69,804.67
600 <u>Supplies</u>				
610 General Supplies	4,306.60	9,331.58		38,937.68
Total Supplies	\$4,306.60	\$9,331.58		\$38,937.68
800 <u>Other Objects</u>				
810 Dues and Fees	4,485.00	3,409.00		43,170.69
820 Claims and Judgments Against the LEA				4,258.15
Total Other Objects	\$4,485.00	\$3,409.00		\$47,428.84
Total 2300 Support Services – Administration	\$1,910,912.17	\$1,414,229.21	\$1,522.24	\$4,300,358.96

LEA : 103028302 Shaler Area SD

Printed 12/11/2023 3:04:05 PM

General Fund (10)

2310 Board Services	<u>Elementary</u>	<u>Secondary</u>	<u>Federal</u>	<u>Total</u>
500 <u>Other Purchased Services</u>				
520 Insurance – General				11,714.28
Total Other Purchased Services				\$11,714.28
600 <u>Supplies</u>				
610 General Supplies				2,872.37
Total Supplies				\$2,872.37
800 <u>Other Objects</u>				
810 Dues and Fees				14,736.65
820 Claims and Judgments Against the LEA				4,258.15
Total Other Objects				\$18,994.80
Total 2310 Board Services				\$33,581.45

LEA : 103028302 Shaler Area SD

Printed 12/11/2023 3:04:05 PM

General Fund (10)

2330 Tax Assessment and Collection Services	<u>Elementary</u>	<u>Secondary</u>	<u>Federal</u>	<u>Total</u>
100 <u>Personnel Services – Salaries</u>				
100 Personnel Services – Salaries				40,248.00
Total Personnel Services – Salaries				\$40,248.00
200 <u>Personnel Services – Employee Benefits</u>				
220 Social Security Contributions				3,078.88
Total Personnel Services – Employee Benefits				\$3,078.88
300 <u>Purchased Professional and Technical Services</u>				
330 Other Professional Services				81,873.04
Total Purchased Professional and Technical Services				\$81,873.04
500 <u>Other Purchased Services</u>				
520 Insurance – General				8,869.00
Total Other Purchased Services				\$8,869.00
600 <u>Supplies</u>				
610 General Supplies				696.89
Total Supplies				\$696.89
Total 2330 Tax Assessment and Collection Services				\$134,765.81

LEA : 103028302 Shaler Area SD

Printed 12/11/2023 3:04:05 PM

General Fund (10)

2350 Legal and Accounting Services	<u>Elementary</u>	<u>Secondary</u>	<u>Federal</u>	<u>Total</u>
300 <u>Purchased Professional and Technical Services</u>				
330 Other Professional Services				299,812.49
Total Purchased Professional and Technical Services				\$299,812.49
Total 2350 Legal and Accounting Services				\$299,812.49

LEA : 103028302 Shaler Area SD

Printed 12/11/2023 3:04:05 PM

General Fund (10)				
2360 Office of the Superintendent / Executive Director Services	<u>Elementary</u>	<u>Secondary</u>	<u>Federal</u>	<u>Total</u>
100 <u>Personnel Services – Salaries</u>				
100 Personnel Services – Salaries				259,580.05
Total Personnel Services – Salaries				\$259,580.05
200 <u>Personnel Services – Employee Benefits</u>				
210 Group Insurance – Contracted Provider				36,365.89
220 Social Security Contributions				17,962.40
230 PSERS Retirement Contributions				87,534.62
280 Other Post-Employment Benefits (OPEB)				736.68
Total Personnel Services – Employee Benefits				\$142,599.59
500 <u>Other Purchased Services</u>				
530 Communications	7,522.30	7,522.29		15,044.59
580 Travel			43.06	20,627.74
591 Services Purchased Locally				1,226.00
Total Other Purchased Services	\$7,522.30	\$7,522.29	\$43.06	\$36,898.33
600 <u>Supplies</u>				
610 General Supplies				21,730.24
Total Supplies				\$21,730.24
800 <u>Other Objects</u>				
810 Dues and Fees				20,540.04
Total Other Objects				\$20,540.04
Total 2360 Office of the Superintendent / Executive Director Services	\$7,522.30	\$7,522.29	\$43.06	\$481,348.25

LEA : 103028302 Shaler Area SD

Printed 12/11/2023 3:04:05 PM

General Fund (10)

2370 Community Relations Services	<u>Elementary</u>	<u>Secondary</u>	<u>Federal</u>	<u>Total</u>
300 <u>Purchased Professional and Technical Services</u>				
330 Other Professional Services				39,274.99
Total Purchased Professional and Technical Services				\$39,274.99
Total 2370 Community Relations Services				\$39,274.99

LEA : 103028302 Shaler Area SD

Printed 12/11/2023 3:04:05 PM

General Fund (10)

2380 Office of the Principal Services	<u>Elementary</u>	<u>Secondary</u>	<u>Federal</u>	<u>Total</u>
100 <u>Personnel Services – Salaries</u>				
100 Personnel Services – Salaries	1,108,045.71	812,677.20		1,920,722.91
Total Personnel Services – Salaries	\$1,108,045.71	\$812,677.20		\$1,920,722.91
200 <u>Personnel Services – Employee Benefits</u>				
210 Group Insurance – Contracted Provider	287,751.26	201,255.62		489,006.88
220 Social Security Contributions	82,770.88	62,442.74		145,213.62
230 PSERS Retirement Contributions	390,446.86	286,594.18		677,041.04
Total Personnel Services – Employee Benefits	\$760,969.00	\$550,292.54		\$1,311,261.54
300 <u>Purchased Professional and Technical Services</u>				
330 Other Professional Services			800.00	800.00
Total Purchased Professional and Technical Services			\$800.00	\$800.00
400 <u>Purchased Property Services</u>				
440 Rentals	22,468.32	22,467.96		44,936.28
Total Purchased Property Services	\$22,468.32	\$22,467.96		\$44,936.28
500 <u>Other Purchased Services</u>				
580 Travel	2,760.24	8,528.64	679.18	11,968.06
591 Services Purchased Locally	355.00			355.00
Total Other Purchased Services	\$3,115.24	\$8,528.64	\$679.18	\$12,323.06
600 <u>Supplies</u>				
610 General Supplies	4,306.60	9,331.58		13,638.18
Total Supplies	\$4,306.60	\$9,331.58		\$13,638.18
800 <u>Other Objects</u>				
810 Dues and Fees	4,485.00	3,409.00		7,894.00
Total Other Objects	\$4,485.00	\$3,409.00		\$7,894.00
Total 2380 Office of the Principal Services	\$1,903,389.87	\$1,406,706.92	\$1,479.18	\$3,311,575.97

LEA : 103028302 Shaler Area SD

Printed 12/11/2023 3:04:05 PM

General Fund (10)				
2400 Support Services – Pupil Health	Elementary	Secondary	Federal	Total
100 Personnel Services – Salaries				
100 Personnel Services – Salaries			28,362.57	467,245.74
Total Personnel Services – Salaries			\$28,362.57	\$467,245.74
200 Personnel Services – Employee Benefits				
210 Group Insurance – Contracted Provider			3,233.00	126,714.04
220 Social Security Contributions			1,593.82	33,008.00
230 PSERS Retirement Contributions			(0.21)	150,550.07
Total Personnel Services – Employee Benefits			\$4,826.61	\$310,272.11
300 Purchased Professional and Technical Services				
323 Professional Educational Services – Other Educational Agencies			142,663.80	144,840.80
330 Other Professional Services				92,701.37
Total Purchased Professional and Technical Services			\$142,663.80	\$237,542.17
400 Purchased Property Services				
430 Repairs and Maintenance Services				353.00
Total Purchased Property Services				\$353.00
500 Other Purchased Services				
580 Travel				11.51
Total Other Purchased Services				\$11.51
600 Supplies				
610 General Supplies				6,211.29
Total Supplies				\$6,211.29
700 Property				
762 Capitalized Equipment - Replacement				949.00
Total Property				\$949.00
Total 2400 Support Services – Pupil Health			\$175,852.98	\$1,022,584.82

LEA : 103028302 Shaler Area SD

Printed 12/11/2023 3:04:05 PM

General Fund (10)

2420 Medical Services

<u>Elementary</u>	<u>Secondary</u>	<u>Federal</u>	<u>Total</u>
-------------------	------------------	----------------	--------------

300 Purchased Professional and Technical Services

330 Other Professional Services			21,450.12
---------------------------------	--	--	-----------

Total Purchased Professional and Technical Services			\$21,450.12
------------------------------------------------------------	--	--	--------------------

Total 2420 Medical Services			\$21,450.12
------------------------------------	--	--	--------------------

LEA : 103028302 Shaler Area SD

Printed 12/11/2023 3:04:05 PM

General Fund (10)				
2430 Dental Services	<u>Elementary</u>	<u>Secondary</u>	<u>Federal</u>	<u>Total</u>
300 <u>Purchased Professional and Technical Services</u>				
330 Other Professional Services				1,136.00
Total Purchased Professional and Technical Services				\$1,136.00
Total 2430 Dental Services				\$1,136.00

LEA : 103028302 Shaler Area SD

Printed 12/11/2023 3:04:05 PM

General Fund (10)				
2440 Nursing Services				
	<u>Elementary</u>	<u>Secondary</u>	<u>Federal</u>	<u>Total</u>
100 <u>Personnel Services – Salaries</u>				
100 Personnel Services – Salaries			28,362.57	467,245.74
Total Personnel Services – Salaries			\$28,362.57	\$467,245.74
200 <u>Personnel Services – Employee Benefits</u>				
210 Group Insurance – Contracted Provider			3,233.00	126,714.04
220 Social Security Contributions			1,593.82	33,008.00
230 PSERS Retirement Contributions			(0.21)	150,550.07
Total Personnel Services – Employee Benefits			\$4,826.61	\$310,272.11
300 <u>Purchased Professional and Technical Services</u>				
323 Professional Educational Services – Other Educational Agencies			142,663.80	144,840.80
330 Other Professional Services				70,115.25
Total Purchased Professional and Technical Services			\$142,663.80	\$214,956.05
400 <u>Purchased Property Services</u>				
430 Repairs and Maintenance Services				353.00
Total Purchased Property Services				\$353.00
500 <u>Other Purchased Services</u>				
580 Travel				11.51
Total Other Purchased Services				\$11.51
600 <u>Supplies</u>				
610 General Supplies				6,211.29
Total Supplies				\$6,211.29
700 <u>Property</u>				
762 Capitalized Equipment - Replacement				949.00
Total Property				\$949.00
Total 2440 Nursing Services			\$175,852.98	\$999,998.70

LEA : 103028302 Shaler Area SD

Printed 12/11/2023 3:04:05 PM

General Fund (10)

2500 Support Services – Business	<u>Elementary</u>	<u>Secondary</u>	<u>Federal</u>	<u>Total</u>
100 <u>Personnel Services – Salaries</u>				
100 Personnel Services – Salaries				393,791.06
Total Personnel Services – Salaries				\$393,791.06
200 <u>Personnel Services – Employee Benefits</u>				
210 Group Insurance – Contracted Provider				89,766.16
220 Social Security Contributions				29,431.36
230 PSERS Retirement Contributions				138,838.38
Total Personnel Services – Employee Benefits				\$258,035.90
300 <u>Purchased Professional and Technical Services</u>				
330 Other Professional Services				146,603.69
Total Purchased Professional and Technical Services				\$146,603.69
400 <u>Purchased Property Services</u>				
440 Rentals				63,187.74
Total Purchased Property Services				\$63,187.74
500 <u>Other Purchased Services</u>				
549 Other Advertising/Public Relations				13,022.80
580 Travel				637.75
Total Other Purchased Services				\$13,660.55
600 <u>Supplies</u>				
610 General Supplies				3,749.55
650 Supplies & Fees – Technology Related				207.00
Total Supplies				\$3,956.55
800 <u>Other Objects</u>				
810 Dues and Fees				2,452.50
Total Other Objects				\$2,452.50
Total 2500 Support Services – Business				\$881,687.99

LEA : 103028302 Shaler Area SD

Printed 12/11/2023 3:04:05 PM

General Fund (10)				
2510 Fiscal Services	<u>Elementary</u>	<u>Secondary</u>	<u>Federal</u>	<u>Total</u>
100 <u>Personnel Services – Salaries</u>				
100 Personnel Services – Salaries				324,916.06
Total Personnel Services – Salaries				\$324,916.06
200 <u>Personnel Services – Employee Benefits</u>				
210 Group Insurance – Contracted Provider				58,251.04
220 Social Security Contributions				24,364.29
230 PSERS Retirement Contributions				114,553.04
Total Personnel Services – Employee Benefits				\$197,168.37
300 <u>Purchased Professional and Technical Services</u>				
330 Other Professional Services				146,603.69
Total Purchased Professional and Technical Services				\$146,603.69
400 <u>Purchased Property Services</u>				
440 Rentals				14,052.36
Total Purchased Property Services				\$14,052.36
500 <u>Other Purchased Services</u>				
549 Other Advertising/Public Relations				13,022.80
580 Travel				637.75
Total Other Purchased Services				\$13,660.55
600 <u>Supplies</u>				
610 General Supplies				3,749.55
650 Supplies & Fees – Technology Related				207.00
Total Supplies				\$3,956.55
800 <u>Other Objects</u>				
810 Dues and Fees				2,452.50
Total Other Objects				\$2,452.50
Total 2510 Fiscal Services				\$702,810.08

LEA : 103028302 Shaler Area SD

Printed 12/11/2023 3:04:05 PM

General Fund (10)				
2519 Other Fiscal Services	<u>Elementary</u>	<u>Secondary</u>	<u>Federal</u>	<u>Total</u>
100 <u>Personnel Services – Salaries</u>				
100 Personnel Services – Salaries				324,916.06
Total Personnel Services – Salaries				\$324,916.06
200 <u>Personnel Services – Employee Benefits</u>				
210 Group Insurance – Contracted Provider				58,251.04
220 Social Security Contributions				24,364.29
230 PSERS Retirement Contributions				114,553.04
Total Personnel Services – Employee Benefits				\$197,168.37
300 <u>Purchased Professional and Technical Services</u>				
330 Other Professional Services				146,603.69
Total Purchased Professional and Technical Services				\$146,603.69
400 <u>Purchased Property Services</u>				
440 Rentals				14,052.36
Total Purchased Property Services				\$14,052.36
500 <u>Other Purchased Services</u>				
549 Other Advertising/Public Relations				13,022.80
580 Travel				637.75
Total Other Purchased Services				\$13,660.55
600 <u>Supplies</u>				
610 General Supplies				3,749.55
650 Supplies & Fees – Technology Related				207.00
Total Supplies				\$3,956.55
800 <u>Other Objects</u>				
810 Dues and Fees				2,452.50
Total Other Objects				\$2,452.50
Total 2519 Other Fiscal Services				\$702,810.08

LEA : 103028302 Shaler Area SD

Printed 12/11/2023 3:04:05 PM

General Fund (10)

2540 Printing, Publishing and Duplicating Services	<u>Elementary</u>	<u>Secondary</u>	<u>Federal</u>	<u>Total</u>
100 <u>Personnel Services – Salaries</u>				
100 Personnel Services – Salaries				68,875.00
Total Personnel Services – Salaries				\$68,875.00
200 <u>Personnel Services – Employee Benefits</u>				
210 Group Insurance – Contracted Provider				31,515.12
220 Social Security Contributions				5,067.07
230 PSERS Retirement Contributions				24,285.34
Total Personnel Services – Employee Benefits				\$60,867.53
400 <u>Purchased Property Services</u>				
440 Rentals				49,135.38
Total Purchased Property Services				\$49,135.38
Total 2540 Printing, Publishing and Duplicating Services				\$178,877.91

LEA : 103028302 Shaler Area SD

Printed 12/11/2023 3:04:05 PM

General Fund (10)				
2600 Operation and Maintenance of Plant Services	<u>Elementary</u>	<u>Secondary</u>	<u>Federal</u>	<u>Total</u>
100 <u>Personnel Services – Salaries</u>				
100 Personnel Services – Salaries				2,933,556.28
Total Personnel Services – Salaries				\$2,933,556.28
200 <u>Personnel Services – Employee Benefits</u>				
210 Group Insurance – Contracted Provider				668,562.62
220 Social Security Contributions				218,342.33
230 PSERS Retirement Contributions				1,019,694.89
280 Other Post-Employment Benefits (OPEB)				1,000.00
Total Personnel Services – Employee Benefits				\$1,907,599.84
300 <u>Purchased Professional and Technical Services</u>				
350 Security / Safety Services				530,146.75
390 Other Purchased Professional and Technical Services				3,565.75
Total Purchased Professional and Technical Services				\$533,712.50
400 <u>Purchased Property Services</u>				
410 Cleaning Services				60,811.29
420 Utility Services				137,962.46
430 Repairs and Maintenance Services			48,204.25	604,386.42
440 Rentals				8,347.92
Total Purchased Property Services			\$48,204.25	\$811,508.09
500 <u>Other Purchased Services</u>				
521 Fire Insurance				152,841.00
522 Automotive Liability Insurance				6,836.00
529 Other Insurance				203.50
530 Communications				80,220.23
580 Travel				2,544.98
Total Other Purchased Services				\$242,645.71
600 <u>Supplies</u>				
610 General Supplies	197,978.56	218,124.86	16,941.48	433,044.90
620 Energy				1,258,441.53
Total Supplies	\$197,978.56	\$218,124.86	\$16,941.48	\$1,691,486.43
700 <u>Property</u>				
752 Capital Equipment – Original and Additional				11,852.64
762 Capitalized Equipment - Replacement				128,866.74
Total Property				\$140,719.38
800 <u>Other Objects</u>				
810 Dues and Fees				1,265.74
Total Other Objects				\$1,265.74
Total 2600 Operation and Maintenance of Plant Services	\$197,978.56	\$218,124.86	\$65,145.73	\$8,262,493.97

LEA : 103028302 Shaler Area SD

Printed 12/11/2023 3:04:05 PM

General Fund (10)

2610 Supervision of Operation and Maintenance of Plant Services	<u>Elementary</u>	<u>Secondary</u>	<u>Federal</u>	<u>Total</u>
100 <u>Personnel Services – Salaries</u>				
100 Personnel Services – Salaries				179,722.02
Total Personnel Services – Salaries				\$179,722.02
200 <u>Personnel Services – Employee Benefits</u>				
210 Group Insurance – Contracted Provider				33,048.36
220 Social Security Contributions				13,506.56
230 PSERS Retirement Contributions				63,370.02
Total Personnel Services – Employee Benefits				\$109,924.94
400 <u>Purchased Property Services</u>				
430 Repairs and Maintenance Services				6,200.00
440 Rentals				1,200.00
Total Purchased Property Services				\$7,400.00
500 <u>Other Purchased Services</u>				
580 Travel				2,544.98
Total Other Purchased Services				\$2,544.98
600 <u>Supplies</u>				
610 General Supplies		1,095.87		1,095.87
Total Supplies		\$1,095.87		\$1,095.87
800 <u>Other Objects</u>				
810 Dues and Fees				403.75
Total Other Objects				\$403.75
Total 2610 Supervision of Operation and Maintenance of Plant Services		\$1,095.87		\$301,091.56

LEA : 103028302 Shaler Area SD

Printed 12/11/2023 3:04:05 PM

General Fund (10)

2611 Supervision of Operation and Maintenance of Plant Services – Head of Component	<u>Elementary</u>	<u>Secondary</u>	<u>Federal</u>	<u>Total</u>
100 <u>Personnel Services – Salaries</u>				
100 Personnel Services – Salaries				179,722.02
Total Personnel Services – Salaries				\$179,722.02
200 <u>Personnel Services – Employee Benefits</u>				
210 Group Insurance – Contracted Provider				33,048.36
220 Social Security Contributions				13,506.56
230 PSERS Retirement Contributions				63,370.02
Total Personnel Services – Employee Benefits				\$109,924.94
400 <u>Purchased Property Services</u>				
430 Repairs and Maintenance Services				6,200.00
440 Rentals				1,200.00
Total Purchased Property Services				\$7,400.00
500 <u>Other Purchased Services</u>				
580 Travel				2,443.63
Total Other Purchased Services				\$2,443.63
600 <u>Supplies</u>				
610 General Supplies		1,095.87		1,095.87
Total Supplies		\$1,095.87		\$1,095.87
800 <u>Other Objects</u>				
810 Dues and Fees				403.75
Total Other Objects				\$403.75
Total 2611 Supervision of Operation and Maintenance of Plant Services – Head of Component		\$1,095.87		\$300,990.21

LEA : 103028302 Shaler Area SD

Printed 12/11/2023 3:04:05 PM

General Fund (10)

2619 Supervision of Operation and Maintenance of Plant Services – All Other Supervision	<u>Elementary</u>	<u>Secondary</u>	<u>Federal</u>	<u>Total</u>
500 <u>Other Purchased Services</u>				
580 Travel				101.35
Total Other Purchased Services				\$101.35
Total 2619 Supervision of Operation and Maintenance of Plant Services – All Other Supervision				\$101.35

LEA : 103028302 Shaler Area SD

Printed 12/11/2023 3:04:05 PM

General Fund (10)				
2620 Operation of Buildings Services	<u>Elementary</u>	<u>Secondary</u>	<u>Federal</u>	<u>Total</u>
100 <u>Personnel Services – Salaries</u>				
100 Personnel Services – Salaries				2,753,834.26
Total Personnel Services – Salaries				\$2,753,834.26
200 <u>Personnel Services – Employee Benefits</u>				
210 Group Insurance – Contracted Provider				635,514.26
220 Social Security Contributions				204,835.77
230 PSERS Retirement Contributions				956,324.87
280 Other Post-Employment Benefits (OPEB)				1,000.00
Total Personnel Services – Employee Benefits				\$1,797,674.90
300 <u>Purchased Professional and Technical Services</u>				
390 Other Purchased Professional and Technical Services				3,565.75
Total Purchased Professional and Technical Services				\$3,565.75
400 <u>Purchased Property Services</u>				
410 Cleaning Services				60,811.29
420 Utility Services				137,962.46
430 Repairs and Maintenance Services			48,204.25	539,919.31
440 Rentals				7,147.92
Total Purchased Property Services			\$48,204.25	\$745,840.98
500 <u>Other Purchased Services</u>				
521 Fire Insurance				152,841.00
529 Other Insurance				203.50
530 Communications				80,220.23
Total Other Purchased Services				\$233,264.73
600 <u>Supplies</u>				
610 General Supplies	180,876.58	177,952.20	16,941.48	375,770.26
620 Energy				1,244,408.27
Total Supplies	\$180,876.58	\$177,952.20	\$16,941.48	\$1,620,178.53
700 <u>Property</u>				
752 Capital Equipment – Original and Additional				11,852.64
762 Capitalized Equipment - Replacement				(120.00)
Total Property				\$11,732.64
800 <u>Other Objects</u>				
810 Dues and Fees				861.99
Total Other Objects				\$861.99
Total 2620 Operation of Buildings Services	\$180,876.58	\$177,952.20	\$65,145.73	\$7,166,953.78

LEA : 103028302 Shaler Area SD

Printed 12/11/2023 3:04:05 PM

General Fund (10)

2630 Care and Upkeep of Grounds Services	<u>Elementary</u>	<u>Secondary</u>	<u>Federal</u>	<u>Total</u>
400 <u>Purchased Property Services</u>				
430 Repairs and Maintenance Services				19,890.12
Total Purchased Property Services				\$19,890.12
600 <u>Supplies</u>				
610 General Supplies	17,086.88	34,615.20		51,702.08
Total Supplies	\$17,086.88	\$34,615.20		\$51,702.08
700 <u>Property</u>				
762 Capitalized Equipment - Replacement				5,035.50
Total Property				\$5,035.50
Total 2630 Care and Upkeep of Grounds Services	\$17,086.88	\$34,615.20		\$76,627.70

LEA : 103028302 Shaler Area SD

Printed 12/11/2023 3:04:05 PM

General Fund (10)

2650 Vehicle Operation and Maintenance Services (Other Than Student Transportation Vehicles)	<u>Elementary</u>	<u>Secondary</u>	<u>Federal</u>	<u>Total</u>
400 <u>Purchased Property Services</u>				
430 Repairs and Maintenance Services				34,749.55
Total Purchased Property Services				\$34,749.55
500 <u>Other Purchased Services</u>				
522 Automotive Liability Insurance				6,836.00
Total Other Purchased Services				\$6,836.00
600 <u>Supplies</u>				
610 General Supplies		4,461.59		4,461.59
620 Energy				14,033.26
Total Supplies		\$4,461.59		\$18,494.85
700 <u>Property</u>				
762 Capitalized Equipment - Replacement				123,951.24
Total Property				\$123,951.24
Total 2650 Vehicle Operation and Maintenance Services (Other Than Student Transportation Vehicles)		\$4,461.59		\$184,031.64

LEA : 103028302 Shaler Area SD

Printed 12/11/2023 3:04:05 PM

General Fund (10)

2660 Safety and Security Services	<u>Elementary</u>	<u>Secondary</u>	<u>Federal</u>	<u>Total</u>
300 <u>Purchased Professional and Technical Services</u>				
350 Security / Safety Services				530,146.75
Total Purchased Professional and Technical Services				\$530,146.75
400 <u>Purchased Property Services</u>				
430 Repairs and Maintenance Services				3,627.44
Total Purchased Property Services				\$3,627.44
600 <u>Supplies</u>				
610 General Supplies	15.10			15.10
Total Supplies	\$15.10			\$15.10
Total 2660 Safety and Security Services	\$15.10			\$533,789.29

LEA : 103028302 Shaler Area SD

Printed 12/11/2023 3:04:05 PM

General Fund (10)				
2700 Student Transportation Services	<u>Elementary</u>	<u>Secondary</u>	<u>Federal</u>	<u>Total</u>
100 <u>Personnel Services – Salaries</u>				
100 Personnel Services – Salaries				44,720.22
Total Personnel Services – Salaries				\$44,720.22
200 <u>Personnel Services – Employee Benefits</u>				
210 Group Insurance – Contracted Provider				7,643.06
220 Social Security Contributions				3,316.33
230 PSERS Retirement Contributions				15,768.37
Total Personnel Services – Employee Benefits				\$26,727.76
300 <u>Purchased Professional and Technical Services</u>				
330 Other Professional Services				49,876.30
Total Purchased Professional and Technical Services				\$49,876.30
500 <u>Other Purchased Services</u>				
513 Contracted Carriers			96,785.64	3,597,189.29
516 Student Transportation Services From the IU				12.30
Total Other Purchased Services			\$96,785.64	\$3,597,201.59
600 <u>Supplies</u>				
620 Energy				83,773.56
650 Supplies & Fees – Technology Related				24,263.09
Total Supplies				\$108,036.65
Total 2700 Student Transportation Services			\$96,785.64	\$3,826,562.52

LEA : 103028302 Shaler Area SD

Printed 12/11/2023 3:04:05 PM

General Fund (10)

2710 Supervision of Student Transportation Services	<u>Elementary</u>	<u>Secondary</u>	<u>Federal</u>	<u>Total</u>
100 <u>Personnel Services – Salaries</u>				
100 Personnel Services – Salaries				44,720.22
Total Personnel Services – Salaries				\$44,720.22
200 <u>Personnel Services – Employee Benefits</u>				
210 Group Insurance – Contracted Provider				7,643.06
220 Social Security Contributions				3,316.33
230 PSERS Retirement Contributions				15,768.37
Total Personnel Services – Employee Benefits				\$26,727.76
600 <u>Supplies</u>				
650 Supplies & Fees – Technology Related				24,263.09
Total Supplies				\$24,263.09
Total 2710 Supervision of Student Transportation Services				\$95,711.07

LEA : 103028302 Shaler Area SD

Printed 12/11/2023 3:04:05 PM

General Fund (10)

2719 Supervision of Student Transportation Services – All Other Supervision	<u>Elementary</u>	<u>Secondary</u>	<u>Federal</u>	<u>Total</u>
100 <u>Personnel Services – Salaries</u>				
100 Personnel Services – Salaries				44,720.22
Total Personnel Services – Salaries				\$44,720.22
200 <u>Personnel Services – Employee Benefits</u>				
210 Group Insurance – Contracted Provider				7,643.06
220 Social Security Contributions				3,316.33
230 PSERS Retirement Contributions				15,768.37
Total Personnel Services – Employee Benefits				\$26,727.76
600 <u>Supplies</u>				
650 Supplies & Fees – Technology Related				24,263.09
Total Supplies				\$24,263.09
Total 2719 Supervision of Student Transportation Services – All Other Supervision				\$95,711.07

LEA : 103028302 Shaler Area SD

Printed 12/11/2023 3:04:05 PM

General Fund (10)

2720 Vehicle Operation Services	<u>Elementary</u>	<u>Secondary</u>	<u>Federal</u>	<u>Total</u>
500 <u>Other Purchased Services</u>				
513 Contracted Carriers				2,576,824.44
516 Student Transportation Services From the IU				12.30
Total Other Purchased Services				\$2,576,836.74
600 <u>Supplies</u>				
620 Energy				83,773.56
Total Supplies				\$83,773.56
Total 2720 Vehicle Operation Services				\$2,660,610.30

LEA : 103028302 Shaler Area SD

Printed 12/11/2023 3:04:05 PM

General Fund (10)

2730 Monitoring Services	<u>Elementary</u>	<u>Secondary</u>	<u>Federal</u>	<u>Total</u>
500 <u>Other Purchased Services</u>				
513 Contracted Carriers				218,319.28
Total Other Purchased Services				\$218,319.28
Total 2730 Monitoring Services				\$218,319.28

LEA : 103028302 Shaler Area SD

Printed 12/11/2023 3:04:05 PM

General Fund (10)

2750 Nonpublic Transportation	<u>Elementary</u>	<u>Secondary</u>	<u>Federal</u>	<u>Total</u>
500 <u>Other Purchased Services</u>				
513 Contracted Carriers			96,785.64	802,045.57
Total Other Purchased Services			\$96,785.64	\$802,045.57
Total 2750 Nonpublic Transportation			\$96,785.64	\$802,045.57

LEA : 103028302 Shaler Area SD

Printed 12/11/2023 3:04:05 PM

General Fund (10)

2790 Other Student Transportation Services	<u>Elementary</u>	<u>Secondary</u>	<u>Federal</u>	<u>Total</u>
300 <u>Purchased Professional and Technical Services</u>				
330 Other Professional Services				49,876.30
Total Purchased Professional and Technical Services				\$49,876.30
Total 2790 Other Student Transportation Services				\$49,876.30

LEA : 103028302 Shaler Area SD

Printed 12/11/2023 3:04:05 PM

General Fund (10)				
2800 Support Services – Central				
	<u>Elementary</u>	<u>Secondary</u>	<u>Federal</u>	<u>Total</u>
100 <u>Personnel Services – Salaries</u>				
100 Personnel Services – Salaries				633,822.56
Total Personnel Services – Salaries				\$633,822.56
200 <u>Personnel Services – Employee Benefits</u>				
210 Group Insurance – Contracted Provider				149,294.26
220 Social Security Contributions				47,063.87
230 PSERS Retirement Contributions				220,539.62
Total Personnel Services – Employee Benefits				\$416,897.75
300 <u>Purchased Professional and Technical Services</u>				
330 Other Professional Services				33,842.96
360 Employee Training and Development Services			8,885.00	14,834.12
Total Purchased Professional and Technical Services			\$8,885.00	\$48,677.08
500 <u>Other Purchased Services</u>				
520 Insurance – General				26,522.00
580 Travel				2,771.74
Total Other Purchased Services				\$29,293.74
600 <u>Supplies</u>				
610 General Supplies				1,696.56
650 Supplies & Fees – Technology Related			9,200.00	94,208.78
Total Supplies			\$9,200.00	\$95,905.34
700 <u>Property</u>				
752 Capital Equipment – Original and Additional				(21,085.40)
756 Capitalized Technology Equipment – Original				2,800.00
766 Capitalized Technology Equipment – Replacement				8,163.30
768 Capitalized Technology Software - Replacement				23,171.44
Total Property				\$13,049.34
800 <u>Other Objects</u>				
810 Dues and Fees				660.00
Total Other Objects				\$660.00
Total 2800 Support Services – Central			\$18,085.00	\$1,238,305.81

LEA : 103028302 Shaler Area SD

Printed 12/11/2023 3:04:05 PM

General Fund (10)

2810 Planning, Research, Development and Evaluation Services	<u>Elementary</u>	<u>Secondary</u>	<u>Federal</u>	<u>Total</u>
100 <u>Personnel Services – Salaries</u>				
100 Personnel Services – Salaries				408,410.33
Total Personnel Services – Salaries				\$408,410.33
200 <u>Personnel Services – Employee Benefits</u>				
210 Group Insurance – Contracted Provider				94,204.89
220 Social Security Contributions				30,431.70
230 PSERS Retirement Contributions				143,990.25
Total Personnel Services – Employee Benefits				\$268,626.84
500 <u>Other Purchased Services</u>				
520 Insurance – General				26,522.00
580 Travel				2,626.74
Total Other Purchased Services				\$29,148.74
600 <u>Supplies</u>				
650 Supplies & Fees – Technology Related			9,200.00	94,208.78
Total Supplies			\$9,200.00	\$94,208.78
700 <u>Property</u>				
752 Capital Equipment – Original and Additional				(21,085.40)
756 Capitalized Technology Equipment – Original				2,800.00
766 Capitalized Technology Equipment – Replacement				8,163.30
768 Capitalized Technology Software - Replacement				23,171.44
Total Property				\$13,049.34
800 <u>Other Objects</u>				
810 Dues and Fees				660.00
Total Other Objects				\$660.00
Total 2810 Planning, Research, Development and Evaluation Services			\$9,200.00	\$814,104.03

LEA : 103028302 Shaler Area SD

Printed 12/11/2023 3:04:05 PM

General Fund (10)				
2830 Staff Services				
	<u>Elementary</u>	<u>Secondary</u>	<u>Federal</u>	<u>Total</u>
100 <u>Personnel Services – Salaries</u>				
100 Personnel Services – Salaries				172,692.11
Total Personnel Services – Salaries				\$172,692.11
200 <u>Personnel Services – Employee Benefits</u>				
210 Group Insurance – Contracted Provider				43,950.90
220 Social Security Contributions				12,692.69
230 PSERS Retirement Contributions				59,768.28
Total Personnel Services – Employee Benefits				\$116,411.87
300 <u>Purchased Professional and Technical Services</u>				
330 Other Professional Services				33,842.96
360 Employee Training and Development Services			8,885.00	14,834.12
Total Purchased Professional and Technical Services			\$8,885.00	\$48,677.08
500 <u>Other Purchased Services</u>				
580 Travel				145.00
Total Other Purchased Services				\$145.00
600 <u>Supplies</u>				
610 General Supplies				1,696.56
Total Supplies				\$1,696.56
Total 2830 Staff Services			\$8,885.00	\$339,622.62

LEA : 103028302 Shaler Area SD

Printed 12/11/2023 3:04:05 PM

General Fund (10)

2831 Supervision of Staff Services	<u>Elementary</u>	<u>Secondary</u>	<u>Federal</u>	<u>Total</u>
100 <u>Personnel Services – Salaries</u>				
100 Personnel Services – Salaries				53,945.99
Total Personnel Services – Salaries				\$53,945.99
200 <u>Personnel Services – Employee Benefits</u>				
210 Group Insurance – Contracted Provider				1,297.06
220 Social Security Contributions				3,927.17
230 PSERS Retirement Contributions				18,316.99
Total Personnel Services – Employee Benefits				\$23,541.22
Total 2831 Supervision of Staff Services				\$77,487.21

LEA : 103028302 Shaler Area SD

Printed 12/11/2023 3:04:05 PM

General Fund (10)

2834 Staff Development Services – Non-Instructional, Certified Staff Only	<u>Elementary</u>	<u>Secondary</u>	<u>Federal</u>	<u>Total</u>
300 <u>Purchased Professional and Technical Services</u>				
360 Employee Training and Development Services			8,885.00	10,470.00
Total Purchased Professional and Technical Services			\$8,885.00	\$10,470.00
500 <u>Other Purchased Services</u>				
580 Travel				145.00
Total Other Purchased Services				\$145.00
Total 2834 Staff Development Services – Non-Instructional, Certified Staff Only			\$8,885.00	\$10,615.00

LEA : 103028302 Shaler Area SD

Printed 12/11/2023 3:04:05 PM

General Fund (10)

2836 Staff Development Services – Non-Instructional, Non-Certified Staff Only	<u>Elementary</u>	<u>Secondary</u>	<u>Federal</u>	<u>Total</u>
300 <u>Purchased Professional and Technical Services</u>				
360 Employee Training and Development Services				4,364.12
Total Purchased Professional and Technical Services				\$4,364.12
Total 2836 Staff Development Services – Non-Instructional, Non-Certified Staff Only				\$4,364.12

LEA : 103028302 Shaler Area SD

Printed 12/11/2023 3:04:05 PM

General Fund (10)

2839 Other Staff Services	<u>Elementary</u>	<u>Secondary</u>	<u>Federal</u>	<u>Total</u>
100 <u>Personnel Services – Salaries</u>				
100 Personnel Services – Salaries				118,746.12
Total Personnel Services – Salaries				\$118,746.12
200 <u>Personnel Services – Employee Benefits</u>				
210 Group Insurance – Contracted Provider				42,653.84
220 Social Security Contributions				8,765.52
230 PSERS Retirement Contributions				41,451.29
Total Personnel Services – Employee Benefits				\$92,870.65
300 <u>Purchased Professional and Technical Services</u>				
330 Other Professional Services				33,842.96
Total Purchased Professional and Technical Services				\$33,842.96
600 <u>Supplies</u>				
610 General Supplies				1,696.56
Total Supplies				\$1,696.56
Total 2839 Other Staff Services				\$247,156.29

LEA : 103028302 Shaler Area SD

Printed 12/11/2023 3:04:05 PM

General Fund (10)

2840 Data Processing Services	<u>Elementary</u>	<u>Secondary</u>	<u>Federal</u>	<u>Total</u>
100 <u>Personnel Services – Salaries</u>				
100 Personnel Services – Salaries				22,201.44
Total Personnel Services – Salaries				\$22,201.44
200 <u>Personnel Services – Employee Benefits</u>				
210 Group Insurance – Contracted Provider				7,215.36
220 Social Security Contributions				1,653.57
230 PSERS Retirement Contributions				6,664.57
Total Personnel Services – Employee Benefits				\$15,533.50
Total 2840 Data Processing Services				\$37,734.94

LEA : 103028302 Shaler Area SD

Printed 12/11/2023 3:04:05 PM

General Fund (10)

2850 State and Federal Agency Liaison Services	<u>Elementary</u>	<u>Secondary</u>	<u>Federal</u>	<u>Total</u>
100 <u>Personnel Services – Salaries</u>				
100 Personnel Services – Salaries				30,518.68
Total Personnel Services – Salaries				\$30,518.68
200 <u>Personnel Services – Employee Benefits</u>				
210 Group Insurance – Contracted Provider				3,923.11
220 Social Security Contributions				2,285.91
230 PSERS Retirement Contributions				10,116.52
Total Personnel Services – Employee Benefits				\$16,325.54
Total 2850 State and Federal Agency Liaison Services				\$46,844.22

LEA : 103028302 Shaler Area SD

Printed 12/11/2023 3:04:05 PM

General Fund (10)

2900 Other Support Services	<u>Elementary</u>	<u>Secondary</u>	<u>Federal</u>	<u>Total</u>
500 <u>Other Purchased Services</u>				
595 IU Payments By Withholding				61,632.21
Total Other Purchased Services				\$61,632.21
Total 2900 Other Support Services				\$61,632.21

LEA : 103028302 Shaler Area SD

Printed 12/11/2023 3:04:05 PM

General Fund (10)

2910 Support Services Not Listed Elsewhere In the 2000 Series

Elementary Secondary Federal Total

500 <u>Other Purchased Services</u>				
595 IU Payments By Withholding				61,632.21
Total Other Purchased Services				\$61,632.21
Total 2910 Support Services Not Listed Elsewhere In the 2000 Series				\$61,632.21

LEA : 103028302 Shaler Area SD

Printed 12/11/2023 3:04:12 PM

General Fund (10)	
3000 Operation of Non-Instructional Services	<u>Total</u>
100 <u>Personnel Services – Salaries</u>	
100 Personnel Services – Salaries	1,154,613.98
Total Personnel Services – Salaries	\$1,154,613.98
200 <u>Personnel Services – Employee Benefits</u>	
210 Group Insurance – Contracted Provider	64,228.47
220 Social Security Contributions	86,272.82
230 PSERS Retirement Contributions	365,754.24
Total Personnel Services – Employee Benefits	\$516,255.53
300 <u>Purchased Professional and Technical Services</u>	
329 Professional Educational Services – Other	100.00
330 Other Professional Services	34,608.00
350 Security / Safety Services	28,262.11
Total Purchased Professional and Technical Services	\$62,970.11
400 <u>Purchased Property Services</u>	
410 Cleaning Services	6,506.40
430 Repairs and Maintenance Services	14,457.58
Total Purchased Property Services	\$20,963.98
500 <u>Other Purchased Services</u>	
510 Student Transportation Services	108,349.52
520 Insurance – General	28,319.00
580 Travel	12,756.83
591 Services Purchased Locally	17,496.31
599 Other Miscellaneous Purchased Services	68,261.52
Total Other Purchased Services	\$235,183.18
600 <u>Supplies</u>	
610 General Supplies	111,383.54
630 Food	71.92
640 Books and Periodicals	14,145.46
Total Supplies	\$125,600.92
700 <u>Property</u>	
752 Capital Equipment – Original and Additional	17,491.51
762 Capitalized Equipment - Replacement	23,681.86
Total Property	\$41,173.37
800 <u>Other Objects</u>	
810 Dues and Fees	27,258.01
860 Grants To Municipal and Community Service Organizations	26,899.87
Total Other Objects	\$54,157.88
Total 3000 Operation of Non-Instructional Services	\$2,210,918.95

LEA : 103028302 Shaler Area SD

Printed 12/11/2023 3:04:12 PM

General Fund (10)				
3200 Student Activities	<u>Elementary</u>	<u>Secondary</u>	<u>Federal</u>	<u>Total</u>
100 <u>Personnel Services – Salaries</u>				
100 Personnel Services – Salaries				1,105,609.93
Total Personnel Services – Salaries				\$1,105,609.93
200 <u>Personnel Services – Employee Benefits</u>				
210 Group Insurance – Contracted Provider				64,228.47
220 Social Security Contributions				83,515.34
230 PSERS Retirement Contributions				361,005.60
Total Personnel Services – Employee Benefits				\$508,749.41
300 <u>Purchased Professional and Technical Services</u>				
329 Professional Educational Services – Other				100.00
330 Other Professional Services				34,608.00
350 Security / Safety Services				28,262.11
Total Purchased Professional and Technical Services				\$62,970.11
400 <u>Purchased Property Services</u>				
410 Cleaning Services				6,506.40
430 Repairs and Maintenance Services				14,457.58
Total Purchased Property Services				\$20,963.98
500 <u>Other Purchased Services</u>				
510 Student Transportation Services				108,349.52
520 Insurance – General				28,319.00
580 Travel				12,756.83
591 Services Purchased Locally				17,496.31
599 Other Miscellaneous Purchased Services				68,261.52
Total Other Purchased Services				\$235,183.18
600 <u>Supplies</u>				
610 General Supplies				99,513.58
Total Supplies				\$99,513.58
700 <u>Property</u>				
752 Capital Equipment – Original and Additional				17,491.51
762 Capitalized Equipment - Replacement				23,681.86
Total Property				\$41,173.37
800 <u>Other Objects</u>				
810 Dues and Fees				27,258.01
860 Grants To Municipal and Community Service Organizations				9,500.00
Total Other Objects				\$36,758.01
Total 3200 Student Activities				\$2,110,921.57

LEA : 103028302 Shaler Area SD

Printed 12/11/2023 3:04:12 PM

General Fund (10)				
3300 Community Services				
	<u>Elementary</u>	<u>Secondary</u>	<u>Federal</u>	<u>Total</u>
100 <u>Personnel Services – Salaries</u>				
100 Personnel Services – Salaries				49,004.05
Total Personnel Services – Salaries				\$49,004.05
200 <u>Personnel Services – Employee Benefits</u>				
220 Social Security Contributions				2,757.48
230 PSERS Retirement Contributions				4,748.64
Total Personnel Services – Employee Benefits				\$7,506.12
600 <u>Supplies</u>				
610 General Supplies			1,498.70	11,869.96
630 Food				71.92
640 Books and Periodicals			14,145.46	14,145.46
Total Supplies			\$15,644.16	\$26,087.34
800 <u>Other Objects</u>				
860 Grants To Municipal and Community Service Organizations				17,399.87
Total Other Objects				\$17,399.87
Total 3300 Community Services			\$15,644.16	\$99,997.38

LEA : 103028302 Shaler Area SD

Printed 12/11/2023 3:04:14 PM

General Fund (10)

4000 Facilities Acquisition, Construction and Improvement Services		<u>Total</u>
400	<u>Purchased Property Services</u>	
450	Construction Services	173,577.14
Total Purchased Property Services		\$173,577.14
Total 4000 Facilities Acquisition, Construction and Improvement Services		\$173,577.14

LEA : 103028302 Shaler Area SD

Printed 12/11/2023 3:04:14 PM

General Fund (10)

4600 Existing Building Improvement Services	<u>Elementary</u>	<u>Secondary</u>	<u>Federal</u>	<u>Total</u>
400 <u>Purchased Property Services</u>				
450 Construction Services			173,577.14	173,577.14
Total Purchased Property Services			\$173,577.14	\$173,577.14
Total 4600 Existing Building Improvement Services			\$173,577.14	\$173,577.14

LEA : 103028302 Shaler Area SD

Printed 12/11/2023 3:04:17 PM

General Fund (10)

5000 Other Expenditures and Financing Uses		<u>Total</u>
800 <u>Other Objects</u>		
830 Interest		4,170.27
880 Refunds of Prior Years' Receipts		92,910.00
Total Other Objects		\$97,080.27
900 <u>Other Uses of Funds</u>		
910 Redemption of Principal		136,915.74
939 Other Fund Transfers		7,811,745.29
Total Other Uses of Funds		\$7,948,661.03
Total 5000 Other Expenditures and Financing Uses		\$8,045,741.30

LEA : 103028302 Shaler Area SD

Printed 12/11/2023 3:04:17 PM

General Fund (10)

5100 Debt Service / Other Expenditures and Financing Uses	<u>Elementary</u>	<u>Secondary</u>	<u>Federal</u>	<u>Total</u>
800 <u>Other Objects</u>				
830 Interest				4,170.27
880 Refunds of Prior Years' Receipts				92,910.00
Total Other Objects				\$97,080.27
900 <u>Other Uses of Funds</u>				
910 Redemption of Principal				136,915.74
Total Other Uses of Funds				\$136,915.74
Total 5100 Debt Service / Other Expenditures and Financing Uses				\$233,996.01

LEA : 103028302 Shaler Area SD

Printed 12/11/2023 3:04:17 PM

General Fund (10)

5110 Debt Service	<u>Elementary</u>	<u>Secondary</u>	<u>Federal</u>	<u>Total</u>
800 <u>Other Objects</u>				
830 Interest				4,170.27
Total Other Objects				\$4,170.27
900 <u>Other Uses of Funds</u>				
910 Redemption of Principal				136,915.74
Total Other Uses of Funds				\$136,915.74
Total 5110 Debt Service				\$141,086.01

LEA : 103028302 Shaler Area SD

Printed 12/11/2023 3:04:17 PM

General Fund (10)

5130 Refund of Prior Year Revenues / Receipts	<u>Elementary</u>	<u>Secondary</u>	<u>Federal</u>	<u>Total</u>
800 <u>Other Objects</u>				
880 Refunds of Prior Years' Receipts				92,910.00
Total Other Objects				\$92,910.00
Total 5130 Refund of Prior Year Revenues / Receipts				\$92,910.00

LEA : 103028302 Shaler Area SD

Printed 12/11/2023 3:04:17 PM

General Fund (10)				
5200 Interfund Transfers – Out	<u>Elementary</u>	<u>Secondary</u>	<u>Federal</u>	<u>Total</u>
900 <u>Other Uses of Funds</u>				
939 Other Fund Transfers				7,811,745.29
Total Other Uses of Funds				\$7,811,745.29
Total 5200 Interfund Transfers – Out				\$7,811,745.29

LEA : 103028302 Shaler Area SD

Printed 12/11/2023 3:04:17 PM

General Fund (10)

5240 Debt Service Fund Transfers	<u>Elementary</u>	<u>Secondary</u>	<u>Federal</u>	<u>Total</u>
900 <u>Other Uses of Funds</u>				
939 Other Fund Transfers				7,811,745.29
Total Other Uses of Funds				\$7,811,745.29
Total 5240 Debt Service Fund Transfers				\$7,811,745.29

LEA : 103028302 Shaler Area SD

Printed 12/11/2023 3:04:09 PM

Other Capital Projects Fund (39)

2000 Support Services	<u>Total</u>
300 <u>Purchased Professional and Technical Services</u>	
390 Other Purchased Professional and Technical Services	1,580.00
Total Purchased Professional and Technical Services	\$1,580.00
Total 2000 Support Services	\$1,580.00

LEA : 103028302 Shaler Area SD

Printed 12/11/2023 3:04:09 PM

Other Capital Projects Fund (39)

2600 Operation and Maintenance of Plant Services

<u>Elementary</u>	<u>Secondary</u>	<u>Federal</u>	<u>Total</u>
-------------------	------------------	----------------	--------------

300 Purchased Professional and Technical Services

390 Other Purchased Professional and Technical Services			1,580.00
---------------------------------------------------------	--	--	----------

Total Purchased Professional and Technical Services			\$1,580.00
------------------------------------------------------------	--	--	-------------------

Total 2600 Operation and Maintenance of Plant Services			\$1,580.00
---------------------------------------------------------------	--	--	-------------------

LEA : 103028302 Shaler Area SD

Printed 12/11/2023 3:04:09 PM

Other Capital Projects Fund (39)

2690 Other Operation and Maintenance of Plant Services	<u>Elementary</u>	<u>Secondary</u>	<u>Federal</u>	<u>Total</u>
300 <u>Purchased Professional and Technical Services</u>				
390 Other Purchased Professional and Technical Services				1,580.00
Total Purchased Professional and Technical Services				\$1,580.00
Total 2690 Other Operation and Maintenance of Plant Services				\$1,580.00

LEA : 103028302 Shaler Area SD

Printed 12/11/2023 3:04:16 PM

Other Capital Projects Fund (39)

4000 Facilities Acquisition, Construction and Improvement Services

Total

300 <u>Purchased Professional and Technical Services</u>	
330 Other Professional Services	131,874.87
Total Purchased Professional and Technical Services	\$131,874.87
400 <u>Purchased Property Services</u>	
450 Construction Services	1,167,961.78
490 Other Purchased Property Services	27,775.00
Total Purchased Property Services	\$1,195,736.78
700 <u>Property</u>	
752 Capital Equipment – Original and Additional	413.97
762 Capitalized Equipment - Replacement	345,109.00
Total Property	\$345,522.97
Total 4000 Facilities Acquisition, Construction and Improvement Services	\$1,673,134.62

LEA : 103028302 Shaler Area SD

Printed 12/11/2023 3:04:16 PM

Other Capital Projects Fund (39)

4600 Existing Building Improvement Services	<u>Elementary</u>	<u>Secondary</u>	<u>Federal</u>	<u>Total</u>
300 <u>Purchased Professional and Technical Services</u>				
330 Other Professional Services				131,874.87
Total Purchased Professional and Technical Services				\$131,874.87
400 <u>Purchased Property Services</u>				
450 Construction Services				1,167,961.78
490 Other Purchased Property Services				27,775.00
Total Purchased Property Services				\$1,195,736.78
700 <u>Property</u>				
752 Capital Equipment – Original and Additional				413.97
762 Capitalized Equipment - Replacement				345,109.00
Total Property				\$345,522.97
Total 4600 Existing Building Improvement Services				\$1,673,134.62

LEA : 103028302 Shaler Area SD

Printed 12/11/2023 3:04:10 PM

Debt Service Fund (40)

2000 Support Services

800 Other Objects

810 Dues and Fees	170,385.00
Total Other Objects	\$170,385.00
Total 2000 Support Services	\$170,385.00

LEA : 103028302 Shaler Area SD

Printed 12/11/2023 3:04:10 PM

Debt Service Fund (40)

2300 Support Services – Administration

Elementary Secondary Federal Total

800 Other Objects

810 Dues and Fees 170,385.00

Total Other Objects \$170,385.00

Total 2300 Support Services – Administration \$170,385.00

LEA : 103028302 Shaler Area SD

Printed 12/11/2023 3:04:10 PM

Debt Service Fund (40)

2390 Other Administration Services

Elementary Secondary Federal Total

800 Other Objects

810 Dues and Fees 170,385.00

Total Other Objects \$170,385.00

Total 2390 Other Administration Services \$170,385.00

LEA : 103028302 Shaler Area SD

Printed 12/11/2023 3:04:19 PM

Debt Service Fund (40)

5000 Other Expenditures and Financing Uses

Total

800 <u>Other Objects</u>	
830 Interest	5,426,800.00
Total Other Objects	\$5,426,800.00
900 <u>Other Uses of Funds</u>	
910 Redemption of Principal	2,214,560.00
Total Other Uses of Funds	\$2,214,560.00
Total 5000 Other Expenditures and Financing Uses	\$7,641,360.00

LEA : 103028302 Shaler Area SD

Printed 12/11/2023 3:04:19 PM

Debt Service Fund (40)

5100 Debt Service / Other Expenditures and Financing Uses	<u>Elementary</u>	<u>Secondary</u>	<u>Federal</u>	<u>Total</u>
800 <u>Other Objects</u>				
830 Interest				5,426,800.00
Total Other Objects				\$5,426,800.00
900 <u>Other Uses of Funds</u>				
910 Redemption of Principal				2,214,560.00
Total Other Uses of Funds				\$2,214,560.00
Total 5100 Debt Service / Other Expenditures and Financing Uses				\$7,641,360.00

LEA : 103028302 Shaler Area SD

Printed 12/11/2023 3:04:19 PM

Debt Service Fund (40)

5110 Debt Service	<u>Elementary</u>	<u>Secondary</u>	<u>Federal</u>	<u>Total</u>
800 <u>Other Objects</u>				
830 Interest				5,426,800.00
Total Other Objects				\$5,426,800.00
900 <u>Other Uses of Funds</u>				
910 Redemption of Principal				2,214,560.00
Total Other Uses of Funds				\$2,214,560.00
Total 5110 Debt Service				\$7,641,360.00

LEA : 103028302 Shaler Area SD

Printed 12/11/2023 3:04:21 PM

	General Fund(10)	Student Sponsored Activity Fund(21)	Public Purpose Trust(27)	Other Compt Approved (28)	Athletic / Activity(29)
1000 Instruction					
1100 Regular Programs - Elementary / Secondary	40,632,921.70				
1200 Special Programs - Elementary / Secondary	14,427,029.18				
1300 Vocational Education	1,577,303.77				
1400 Other Instructional Programs - Elementary / Secondary	1,663,744.12				
1500 Nonpublic School Programs	4,236.00				
Total Instruction	\$58,305,234.77				
2000 Support Services					
2100 Support Services - Students	4,285,522.40				
2200 Support Services - Instructional Staff	1,456,847.75				
2300 Support Services - Administration	4,300,358.96				
2400 Support Services - Pupil Health	1,022,584.82				
2500 Support Services - Business	881,687.99				
2600 Operation and Maintenance of Plant Services	8,262,493.97				
2700 Student Transportation Services	3,826,562.52				
2800 Support Services - Central	1,238,305.81				
2900 Other Support Services	61,632.21				
Total Support Services	\$25,335,996.43				
3000 Operation of Non-Instructional Services					
3200 Student Activities	2,110,921.57				
3300 Community Services	99,997.38				
Total Operation of Non-Instructional Services	\$2,210,918.95				
4000 Facilities Acquisition, Construction and Improvement Services					
4600 Existing Building Improvement Services	173,577.14				
Total Facilities Acquisition, Construction and Improvement Services	\$173,577.14				
5000 Other Expenditures and Financing Uses					
5100 Debt Service / Other Expenditures and Financing Uses	233,996.01				
5200 Interfund Transfers - Out	7,811,745.29				
Total Other Expenditures and Financing Uses	\$8,045,741.30				
TOTAL ACTUAL EXPENDITURES & OTHER FINANCING USES	\$94,071,468.59				

LEA : 103028302 Shaler Area SD

Printed 12/11/2023 3:04:21 PM

	<u>Capital Reserve (690.1850)(31)</u>	<u>Capital Reserve (1431)(32)</u>	<u>Other Capital Projects Fund(39)</u>	<u>Debt Service(40)</u>	<u>Permanent(90)</u>
1000 <u>Instruction</u>					
1100 Regular Programs - Elementary / Secondary					
1200 Special Programs - Elementary / Secondary					
1300 Vocational Education					
1400 Other Instructional Programs - Elementary / Secondary					
1500 Nonpublic School Programs					
Total Instruction					
2000 <u>Support Services</u>					
2100 Support Services - Students					
2200 Support Services - Instructional Staff					
2300 Support Services - Administration				170,385.00	
2400 Support Services - Pupil Health					
2500 Support Services - Business					
2600 Operation and Maintenance of Plant Services			1,580.00		
2700 Student Transportation Services					
2800 Support Services - Central					
2900 Other Support Services					
Total Support Services			\$1,580.00	\$170,385.00	
3000 <u>Operation of Non-Instructional Services</u>					
3200 Student Activities					
3300 Community Services					
Total Operation of Non-Instructional Services					
4000 <u>Facilities Acquisition, Construction and Improvement Services</u>					
4600 Existing Building Improvement Services			1,673,134.62		
Total Facilities Acquisition, Construction and Improvement Services			\$1,673,134.62		
5000 <u>Other Expenditures and Financing Uses</u>					
5100 Debt Service / Other Expenditures and Financing Uses				7,641,360.00	
5200 Interfund Transfers - Out					
Total Other Expenditures and Financing Uses				\$7,641,360.00	
TOTAL ACTUAL EXPENDITURES & OTHER FINANCING USES			\$1,674,714.62	\$7,811,745.00	

LEA : 103028302 Shaler Area SD

Printed 12/11/2023 3:04:21 PM

	<u>Total</u>
1000 <u>Instruction</u>	
1100 Regular Programs - Elementary / Secondary	40,632,921.70
1200 Special Programs - Elementary / Secondary	14,427,029.18
1300 Vocational Education	1,577,303.77
1400 Other Instructional Programs - Elementary / Secondary	1,663,744.12
1500 Nonpublic School Programs	4,236.00
Total Instruction	\$58,305,234.77
2000 <u>Support Services</u>	
2100 Support Services - Students	4,285,522.40
2200 Support Services - Instructional Staff	1,456,847.75
2300 Support Services - Administration	4,470,743.96
2400 Support Services - Pupil Health	1,022,584.82
2500 Support Services - Business	881,687.99
2600 Operation and Maintenance of Plant Services	8,264,073.97
2700 Student Transportation Services	3,826,562.52
2800 Support Services - Central	1,238,305.81
2900 Other Support Services	61,632.21
Total Support Services	\$25,507,961.43
3000 <u>Operation of Non-Instructional Services</u>	
3200 Student Activities	2,110,921.57
3300 Community Services	99,997.38
Total Operation of Non-Instructional Services	\$2,210,918.95
4000 <u>Facilities Acquisition, Construction and Improvement Services</u>	
4600 Existing Building Improvement Services	1,846,711.76
Total Facilities Acquisition, Construction and Improvement Services	\$1,846,711.76
5000 <u>Other Expenditures and Financing Uses</u>	
5100 Debt Service / Other Expenditures and Financing Uses	7,875,356.01
5200 Interfund Transfers - Out	7,811,745.29
Total Other Expenditures and Financing Uses	\$15,687,101.30
TOTAL ACTUAL EXPENDITURES & OTHER FINANCING USES	\$103,557,928.21

LEA : 103028302 Shaler Area SD

Printed 12/11/2023 3:04:33 PM

PSERS Salary Data (Salary Data should relate to the General Fund only)

Amount	Description	Amount
	Total Salary Base for salaries subject to PSERS withholding	42,726,208.40
	Total Federally Funded salaries subject to PSERS withholding	1,068,314.46

Title I Expenditure Data

Amount	Description	Amount
	Expenditures Funded with Current Title I Funds	601,979.26
	Expenditures Funded with Carry over Title I Funds	
Total	Title I Expenditure Data	\$601,979.26

Title IV Revenue Data

Amount	Description	Amount
	Revenue from Title IV-A-1: Student Support and Academic Enrichment Grants	118,405.00
	Revenue from Title IV-B: 21st Century Community Learning Centers	

Title V Revenue Data

Amount	Description	Amount
	Revenue from Title V-B-2: Rural and Low-Income School Programs	
	Revenue from Title V-B-1: Small Rural School Achievement (Directly from the Federal Govt)	

LEA : 103028302 Shaler Area SD

1 .	<u>Current Special Education Expenditures within Function 1000</u> See list of exclusions in the note below.	13,624,408.28
2 .	<u>Current Special Education Expenditures within Function 2000</u> See list of exclusions in the note below.	5,675,784.30
2A.	<u>Current Special Education Expenditures within Sub-Function 2100</u> This data should also be included in line 2 above. See list of exclusions in the note below.	4,181,481.60
2B.	<u>Current Special Education Expenditures within Sub-Function 2200</u> This data should also be included in line 2 above. See list of exclusions in the note below.	563,191.61
2C.	<u>Current Special Education Expenditures within Sub-Function 2700</u> This data should also be included in line 2 above. See list of exclusions in the note below.	931,111.09
3.	<u>Current Special Education Expenditures within Sub-Function 3100</u> See list of exclusions in the note below.	
4.	<u>Current Special Education Expenditures within Sub-Function 3200</u> See list of exclusions in the note below.	

Note: The Current Special Education Expenditure amounts for each line should be calculated as follows:

- * Include the total expenditures for special education costs from all governmental funds and the food service fund 51 for the function/sub-function requested
- * Exclude data from sub-functions: 1243,1450,1500,1600,1807,2280,2450,2750,2990
- * Exclude data from objects: 322,511,512,516,561,562,564,566,592,593,594,595,596,597,700,830,899

Benefits for Staff Relative to Collective Bargaining Agreements

	OBJECT	COVERED	NOT COVERED	TOTAL
10 General Fund	No Self Insurance data to report			
	211 Medical Insurance	7,437,038.74	461,368.92	7,898,407.66
	212 Dental Insurance	432,176.77	26,796.36	458,973.13
	215 Eye Care Insurance	83,984.46	4,210.56	88,195.02
	216 Prescription Insurance			
	271 Self-Insurance Medical Benefits			
	272 Self-Insurance Dental Benefits			
	275 Self-Insurance Eye Care Benefits			
	276 Self-Insurance Prescription Benefits			
	FUND TOTAL	\$7,953,199.97	\$492,375.84	\$8,445,575.81
50 Enterprise Fund	No Self Insurance data to report			
	211 Medical Insurance			
	212 Dental Insurance			
	215 Eye Care Insurance			
	216 Prescription Insurance			
	271 Self-Insurance Medical Benefits			
	272 Self-Insurance Dental Benefits			
	275 Self-Insurance Eye Care Benefits			
	276 Self-Insurance Prescription Benefits			
	FUND TOTAL			
60 Internal Service Fund	No Self Insurance data to report			
	211 Medical Insurance			
	212 Dental Insurance			
	215 Eye Care Insurance			
	216 Prescription Insurance			
	271 Self-Insurance Medical Benefits			
	272 Self-Insurance Dental Benefits			
	275 Self-Insurance Eye Care Benefits			
	276 Self-Insurance Prescription Benefits			
	FUND TOTAL			
Total of All Funds		\$7,953,199.97	\$492,375.84	\$8,445,575.81

LEA : 103028302 Shaler Area SD

Printed 12/11/2023 3:04:37 PM

Function	Special Education (Prior Year)	Nonspecial Education (Prior Year)	Total (Prior Year)	Special Education (Current Year)	Nonspecial Education (Current Year)	Total (Current Year)
2120 Guidance Services	683,379.97	1,594,553.27	2,277,933.24	704,850.36	1,644,650.85	2,349,501.21
2140 Psychological Services	173,445.67	404,706.58	578,152.25	171,569.70	400,329.30	571,899.00
2150 Speech Pathology and Audiology Services						
2160 Social Work Services	221,867.00	517,689.67	739,556.67	231,204.18	539,476.41	770,680.59
2260 Instruction and Curriculum Development Services	136,161.51	317,710.21	453,871.72	139,708.74	325,987.07	465,695.81
2350 Legal and Accounting Services	73,749.29	172,081.69	245,830.98	89,943.74	209,868.75	299,812.49
2420 Medical Services	6,435.04	15,015.08	21,450.12	6,435.04	15,015.08	21,450.12
2440 Nursing Services	265,960.02	620,573.37	886,533.39	299,999.61	699,999.09	999,998.70
2700 Student Transportation Services	1,129,049.74	2,634,449.38	3,763,499.12	1,147,968.76	2,678,593.76	3,826,562.52
Total	\$2,690,048.24	\$6,276,779.25	\$8,966,827.49	\$2,791,680.13	\$6,513,920.31	\$9,305,600.44

LEA : 103028302 Shaler Area SD

(PRINCIPAL AMOUNTS ONLY)								
<u>GOVERNMENTAL FUNDS/ ACTIVITIES</u>	Short-Term Borrowing	General Obligation Bonds/Notes	Authority Building Obligations	Leases, Other Right to Use Arrangements	Extended Term Financing Agreements	Other Long Term Debt/Liabilities	OPEB, Comp Abs, Net Pension Liab	Total
1. Debt at Beginning of Fiscal Year		86,722,965.00			63,820.00		123,218,800.00	210,005,585.00
2. Additional Debt Incurred During Year							11,253,549.00	11,253,549.00
3. Retirements and Repayments		2,214,560.00			63,820.00		1,926,582.00	4,204,962.00
4. Debt at End of Fiscal Year		84,508,405.00					132,545,767.00	217,054,172.00
5. Accreted Interest at End Of Fiscal Year		14,772,440.00						14,772,440.00
6. Total Debt and Accreted Interest		99,280,845.00					132,545,767.00	231,826,612.00
7. Current Portion P&I - Due within 1 year		8,365,770.00					36,793.00	8,402,563.00
8. Interest Paid during current fiscal year		5,609,970.00			1,270.00			5,611,240.00

(PRINCIPAL AMOUNTS ONLY)							
<u>PROPRIETARY FUNDS</u>							
1. Debt at Beginning of Fiscal Year							
2. Additional Debt Incurred During Year							
3. Retirements and Repayments							
4. Debt at End of Fiscal Year							
5. Accreted Interest at End Of Fiscal Year							
6. Total Debt and Accreted Interest							
7. Current Portion P&I - Due within 1 year							
8. Interest Paid during current fiscal year							

LEA : 103028302 Shaler Area SD

Total Principal and Interest Payments Made by Your School - All Funds

Function	Fund		Principal (910)	Principal (920)	Interest (830)	Total (Principal +Interest)	Misc Other Uses (990)
5110	10	General Fund	136,915.74		4,170.27	141,086.01	
5110	20	Special Revenue Funds					
5110	30	Capital Projects Funds					
5110	40	Debt Service Fund	2,214,560.00		5,426,800.00	7,641,360.00	
5110	90	Permanent Fund					
5120	10	General Fund					
5120	20	Special Revenue Funds					
5120	30	Capital Projects Funds					
5120	40	Debt Service Fund					
5140	10	General Fund					
5140	20	Special Revenue Funds					
5140	30	Capital Projects Funds					
5140	40	Debt Service Fund					
5140	90	Permanent Fund					
Total Debt Payments - Governmental Funds			\$2,351,475.74		\$5,430,970.27	\$7,782,446.01	

Function	Fund		Principal (910)	Principal (920)	Interest (830)	Total (Principal +Interest)
5110	50	Enterprise Fund				
5110	60	Internal Service Fund				
5120	50	Enterprise Fund				
5120	60	Internal Service Fund				
5140	50	Enterprise Fund				
5140	60	Internal Service Fund				

Total Debt Payments - Proprietary Funds						
-----------------------------------------	--	--	--	--	--	--

LEA : 103028302 Shaler Area SD

Printed 12/11/2023 3:04:39 PM

Debt Details
Governmental Funds/ Activities

Debt Category	Debt Issue Date (MM/YYYY)	Principal Amounts Only				Current Portion Due Within One Year (Principal and Interest)	Interest Paid During Fiscal Year
		Debt at Beginning of Fiscal Year	Additions	Reductions / Repayments	Debt at End of Fiscal Year		
General Obligation Bonds/Notes – CIB	11/2021	16,290,000.00		165,000.00	16,125,000.00	611,570.00	447,874.00
General Obligation Bonds/Notes – CIB	11/2021	3,100,000.00		25,000.00	3,075,000.00	113,709.00	89,146.00
General Obligation Bonds/Notes – CIB	07/2020	9,760,000.00		85,000.00	9,675,000.00	277,650.00	194,350.00
General Obligation Bonds/Notes – CIB	05/2019	12,735,000.00		5,000.00	12,730,000.00	640,125.00	635,275.00
General Obligation Bonds/Notes – CIB	05/2016	20,575,000.00		100,000.00	20,475,000.00	1,522,850.00	1,014,250.00
General Obligation Bonds/Notes – CIB	05/2016	20,000.00		5,000.00	15,000.00	5,400.00	500.00
General Obligation Bonds/Notes – CIB	05/2016	20,000.00		5,000.00	15,000.00	5,400.00	500.00
General Obligation Bonds/Notes – CIB	07/2016	1,214,262.00		154,181.00	1,060,081.00	189,526.00	35,705.00
General Obligation Bonds/Notes – CIB	05/2016	1,770,000.00		510,000.00	1,260,000.00	224,950.00	45,450.00
General Obligation Bonds/Notes – CIB	09/2015	455,000.00		5,000.00	450,000.00	16,178.00	11,297.00
General Obligation Bonds/Notes – CIB	08/2013	8,525,000.00		110,000.00	8,415,000.00	4,758,412.00	436,002.00
General Obligation Bonds/Notes – CAB	07/2006	11,213,324.00			11,213,324.00		
General Obligation Bonds/Notes – CAB	10/1997	1,045,379.00		1,045,379.00			2,699,621.00
Extended Term Financing Agreements		63,820.00		63,820.00			1,270.00
Compensated Absences		1,015,920.00	35,549.00		1,051,469.00	36,793.00	
Other Post-Employment Benefits (OPEB)		14,182,880.00		1,926,582.00	12,256,298.00		
Net Pension Liability		108,020,000.00	11,218,000.00		119,238,000.00		
Totals for Debt Entered:		\$210,005,585.00	\$11,253,549.00	\$4,204,962.00	\$217,054,172.00	\$8,402,563.00	\$5,611,240.00

LEA : 103028302 Shaler Area SD

Accreted Interest Detail
Governmental Funds/ Activities

Debt Category	Debt Issue Date (MM/YYYY)	Beginning Accreted Interest	Additions	Reductions	Ending Accreted Interest	Ending bond Principal	Ending Principal Plus Accreted Interest
General Obligation Bonds/Notes – CAB	07/2006	14,722,650.00	49,790.00		14,772,440.00	11,213,324.00	25,985,764.00
General Obligation Bonds/Notes – CAB	10/1997	2,187,821.00	511,800.00	2,699,621.00			
Totals for Debt Entered:		\$16,910,471.00	\$561,590.00	\$2,699,621.00	\$14,772,440.00	\$11,213,324.00	\$25,985,764.00

LEA : 103028302 Shaler Area SD

General Fund (10)

Section 1: Tuition/Purchased Services as Reported within Expenditure Detail	Amount
Tuition Reported in General Fund Expenditures 1000-560	5,413,721.29
Purchased Services in General Fund Expenditures 1000-594 and 1000-597	1,127.66
Section 1 Total	\$5,414,848.95

Section 2: Tuition Paid to Institution Types During Fiscal Year	Tuition Paid For Nonspecial Education	Tuition Paid For Special Education	Total
1 1306 Institutions		1,127.66	1,127.66
2 Institutionalized Children's Programs			
3 Juveniles Incarcerated in Adult Facilities			
4 Residential Treatment Facilities			
5 Other Local Education Agencies		71,018.25	71,018.25
6 Brick and Mortar Charter Schools	342,964.01	388,985.68	731,949.69
7 Cyber Charter Schools	997,975.73	422,717.78	1,420,693.51
8 Career and Technology Centers	1,462,184.20		1,462,184.20
9 Approved Private Schools		792,738.11	792,738.11
10 PA Chartered Schools for the Deaf and Blind			
11 Private Residential Rehabilitative Institutions		44,076.23	44,076.23
12 Juvenile Detention Centers			
13 Special Program Jointures			
14 Other Tuition Not Included Elsewhere In This Section		891,061.30	891,061.30
Section 2 Total	\$2,803,123.94	\$2,611,725.01	\$5,414,848.95

LEA : 103028302 Shaler Area SD

Printed 12/11/2023 3:04:42 PM

Food Service / Cafeteria Operations Fund (51)

3000 Operation of Non-Instructional Services		<u>Total</u>
300	<u>Purchased Professional and Technical Services</u>	
300	Purchased Professional and Technical Services	2,799.00
Total Purchased Professional and Technical Services		\$2,799.00
500	<u>Other Purchased Services</u>	
570	Food Service Management	1,850,327.00
Total Other Purchased Services		\$1,850,327.00
600	<u>Supplies</u>	
610	General Supplies	17,512.00
630	Food	99,868.00
Total Supplies		\$117,380.00
700	<u>Property</u>	
740	Depreciation	7,980.00
Total Property		\$7,980.00
Total 3000 Operation of Non-Instructional Services		\$1,978,486.00

LEA : 103028302 Shaler Area SD

Printed 12/11/2023 3:04:42 PM

Food Service / Cafeteria Operations Fund (51)

3100 Food Services	<u>Elementary</u>	<u>Secondary</u>	<u>Federal</u>	<u>Total</u>
300 <u>Purchased Professional and Technical Services</u>				
300 Purchased Professional and Technical Services				2,799.00
Total Purchased Professional and Technical Services				\$2,799.00
500 <u>Other Purchased Services</u>				
570 Food Service Management				1,850,327.00
Total Other Purchased Services				\$1,850,327.00
600 <u>Supplies</u>				
610 General Supplies				17,512.00
630 Food				99,868.00
Total Supplies				\$117,380.00
700 <u>Property</u>				
740 Depreciation				7,980.00
Total Property				\$7,980.00
Total 3100 Food Services				\$1,978,486.00

	<u>Food Service(51)</u>	<u>Child Care Operations(52)</u>	<u>Other Enterprise(58)</u>	<u>Internal Service(60)</u>	<u>Total</u>
3000 <u>Operation of Non-Instructional Services</u>					
3100 Food Services	1,978,486.00				1,978,486.00
Total Operation of Non-Instructional Services	\$1,978,486.00				\$1,978,486.00
TOTAL ACTUAL EXPENDITURES & OTHER FINANCING USES	\$1,978,486.00				\$1,978,486.00

LEA : 103028302 Shaler Area SD

Printed 12/11/2023 3:04:50 PM

Fund	School	School Number	Local Personnel	Local Nonpersonnel	State Personnel	State Nonpersonnel	Federal Personnel	Federal Nonpersonnel	Total	Explanation
10										
	Burchfield Primary Sch	4696	4,634,298.00	644,440.00	969,110.00	76,562.00	102,212.00	86,639.00	6,513,261.00	
	Marzolf Primary Sch	5101	4,443,287.00	510,463.00	572,684.00	61,426.00	502,987.00	114,182.00	6,205,029.00	
	Reserve Primary Sch	4843	2,596,600.00	245,377.00	341,028.00	28,974.00	221,375.00	58,086.00	3,491,440.00	
	Scott Primary Sch	458	4,858,757.00	665,499.00	829,476.00	79,946.00	106,699.00	70,822.00	6,611,199.00	
	Shaler Area El Sch	8001	12,006,880.00	1,724,840.00	1,539,475.00	204,610.00	218,709.00	136,023.00	15,830,537.00	
	Shaler Area HS	460	19,532,040.00	3,036,614.00	2,490,133.00	354,501.00	422,577.00	126,090.00	25,961,955.00	
	Shaler Area MS	8002	10,199,181.00	1,647,781.00	1,307,772.00	307,713.00	139,872.00	98,297.00	13,700,616.00	
Total			58,271,043.00	8,475,014.00	8,049,678.00	1,113,732.00	1,714,431.00	690,139.00	78,314,037.00	